

FAQ / Application Note

Subject : Auto switch on PCIe x16 and x8 Slots

FAQ Document No: _____ **Date:** 2021/11/30

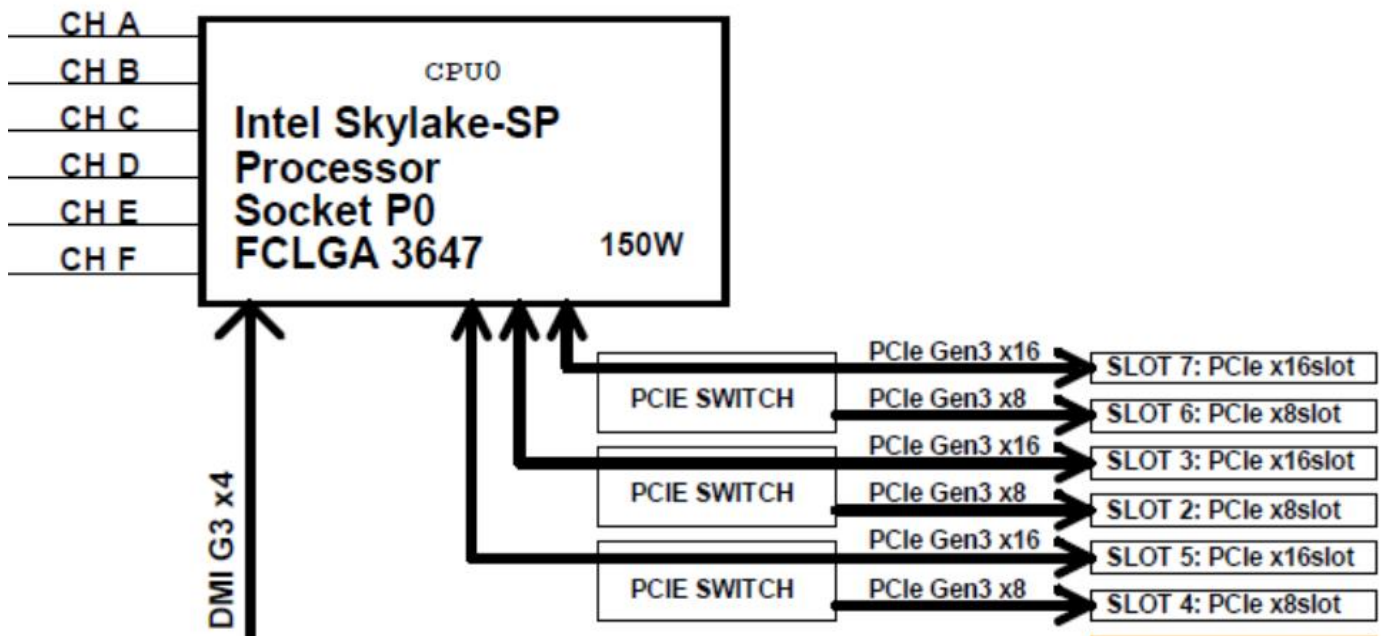
Model Name: HPM-621UA **Rev.** 1.0

Category: General H/W S/W Others,

Purpose:

HPM-621 UA provides a flexible PCIE interface. User can use up to three PCIe x16 slots or six PCIe x8 slots.

Expansion	
Expansion	3 x PCIe x16 slots or 6 x PCIe x8 slots Slot 1, PCI 3.0 Slot 2, PCIe 3.0 x8 Slot 3, PCIe 3.0 x16 (x16 will switch to x8 automatically when Slot 2 is used) Slot 4, PCIe 3.0 x8 Slot 5, PCIe 3.0 x16 (x16 will switch to x8 automatically when Slot 4 is used) Slot 6, PCIe 3.0 x8 Slot 7, PCIe 3.0 x16 (Slot 7 is the slot closest to CPU, x16 will switch to x8 automatically when Slot 6 is used)



The 2-to-1 demultiplexer switch uses PCIe present pin of x8 slot. No matter the device is x1, x4 or x8, once

Avalue Technology Inc.

7F, 228, Lian-Cheng Road, Chung Ho City, Taipei, Taiwan R.O.C.

www.avalu.com.tw
 sales@avalu.com.tw
 Tel:+886-2-82262345
 Fax:+886-2-82262777

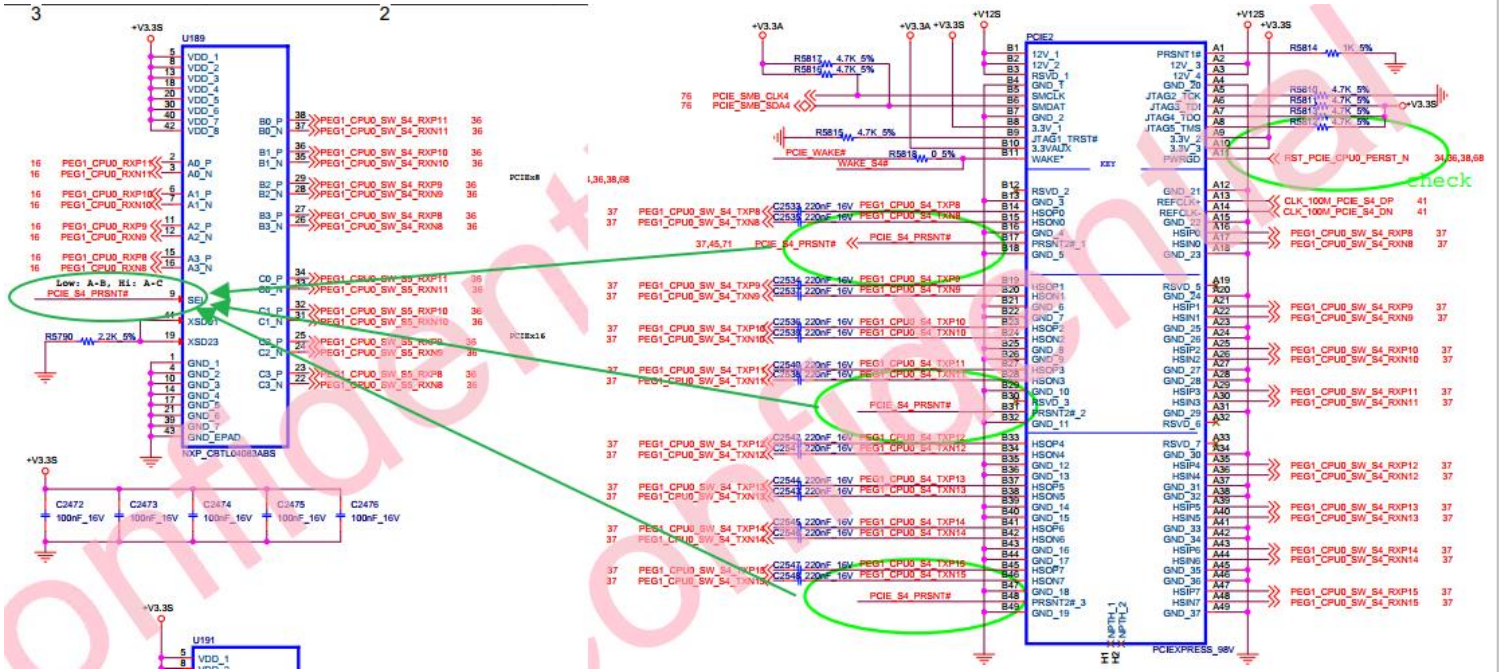
Avalue Europe
 sales.europe@avalu.com.tw
 Tel: +45-7025-0310
 Fax: +45-4975-5026

Avalue USA
 sales@avalu-usa.com
 Tel: +1-732-578-0200
 Fax: +1-732-578-0250

BCM Advanced Research
 BCMSales@bcmcom.com
 Tel: +1-949-470-1888
 Fax: +1-949-470-0971

Avalue China
 sales.china@avalu.com.cn
 Tel: +86-21-5426-3399
 Fax: +86-21-6495-0370

the x8 slot is used and then the x16 slot will switch to x8 width.



Example

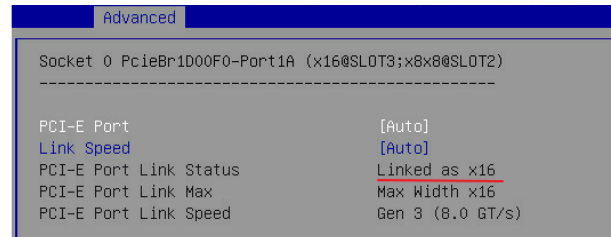
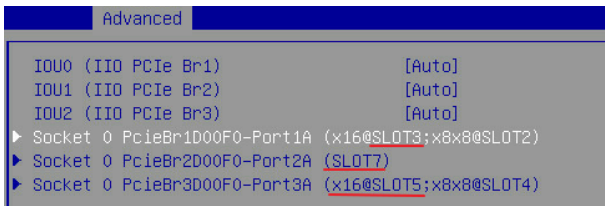
Case 1:

Slot 3 : PCIe X16 Graphic card (Nvidia P620)

Slot 2 : No device

Check Slot 3 link status in BIOS

BIOS > Advanced > I/O Configuration > Socket0 Configuration > Socket 0 PCIeBr1D00F0-Port1A



➔ Slot3 link status is x16.

Check slot 3 link status in Windows

Avalue Technology Inc.

7F, 228, Lian-Cheng Road, Chung Ho City, Taipei, Taiwan R.O.C.

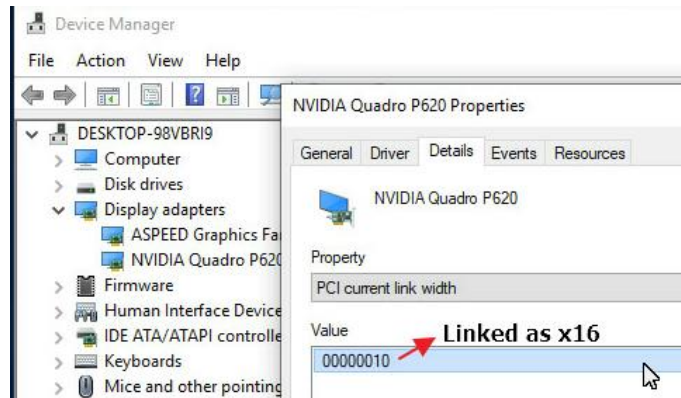
www.avalue.com.tw
sales@avalue.com.tw
Tel: +886-2-82262345
Fax: +886-2-82262777

Avalue Europe
sales.europe@avalue.com.tw
Tel: +45-7025-0310
Fax: +45-4975-5026

Avalue USA
sales@avalue-usa.com
Tel: +1-732-578-0200
Fax: +1-732-578-0250

BCM Advanced Research
BCMSales@bcm.com
Tel: +1-949-470-1888
Fax: +1-949-470-0971

Avalue China
sales.china@avalue.com.cn
Tel: +86-21-5426-3399
Fax: +86-21-6495-0370



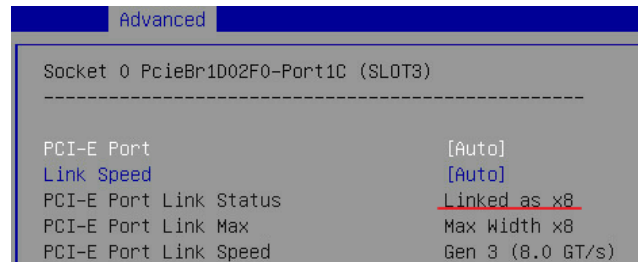
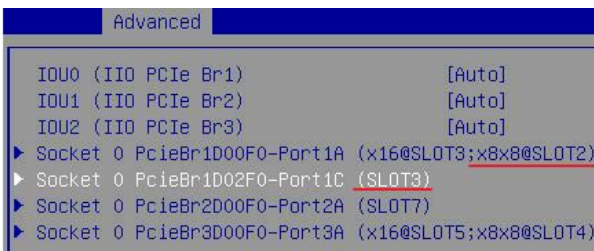
Case 2:

Slot3 : PCIe X16 Graphic card (Nvidia P620)

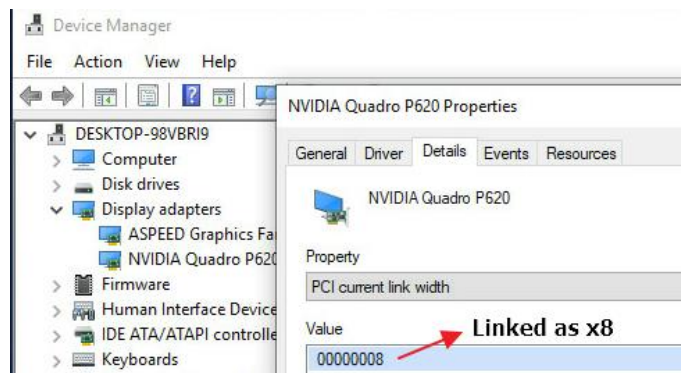
Slot2 : PCIe X1 LAN card

Check link status in BIOS

BIOS > Advanced > I/O Configuration > Socket0 Configuration > Socket 0 PcieBr1D00F0-Port1C



Check slot 3 link status in Windows



Avalue Technology Inc.

7F, 228, Lian-Cheng Road, Chung Ho City, Taipei, Taiwan R.O.C.

www.avalue.com.tw
sales@avalue.com.tw
Tel:+886-2-82262345
Fax:+886-2-82262777

Avalue Europe
sales.europe@avalue.com.tw
Tel: +45-7025-0310
Fax: +45-4975-5026

Avalue USA
sales@avalue-usa.com
Tel: +1-732-578-0200
Fax: +1-732-578-0250

BCM Advanced Research
BCMSales@bcm.com
Tel: +1-949-470-1888
Fax: +1-949-470-0971

Avalue China
sales.china@avalue.com.cn
Tel: +86-21-5426-3399
Fax: +86-21-6495-0370