

## Application Note

**Subject : How to enabled EMX-QM57 Speaker Line-Out function through AAFP1 connector.**

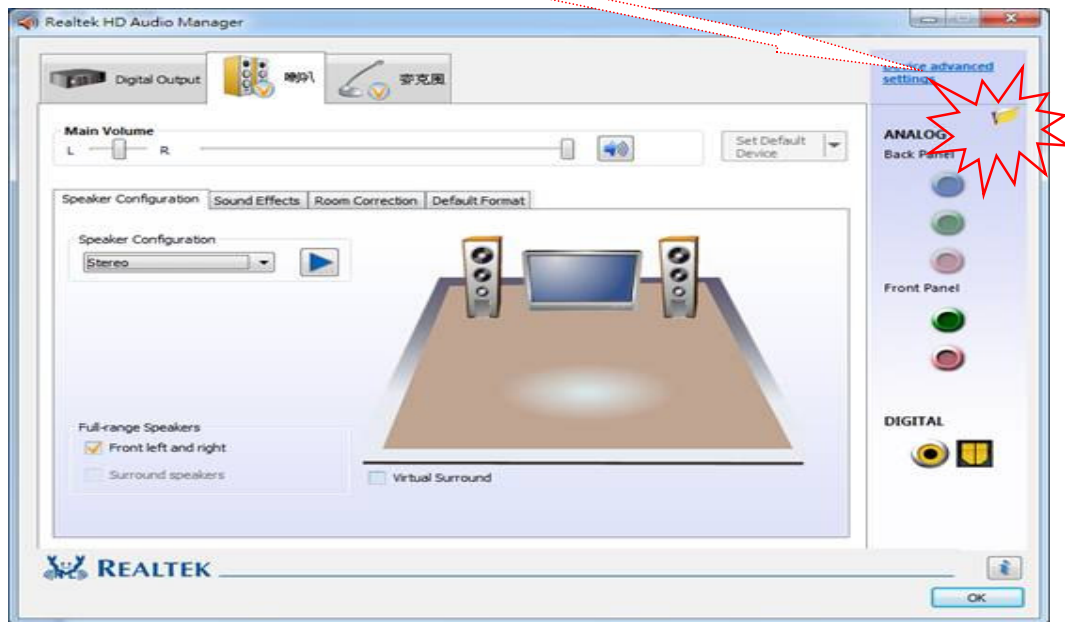
<b>FAQ Document No:</b> S13001	<b>Date:</b> 2013/02/27
<b>Model Name.</b> EMX-QM57; FPC-21W06	<b>Rev.</b> A1
<b>Category:</b> <input type="checkbox"/> General <input type="checkbox"/> H/W <input checked="" type="checkbox"/> S/W <input type="checkbox"/> Others,	

**Purpose :**

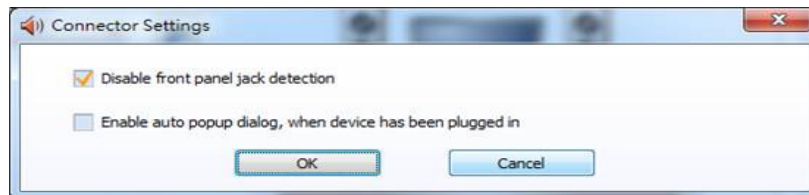
**For Realtek HD audio driver default, the Front Panel out port (Internal speaker usage) is Configured as jack sense pin detection, it will cause no sound out from internal speaker.**

There is one setting under Realtek HD audio Manager must be disabled.

Please open this manager console. Locate this icon  in below screen.



Double click this icon, it will pop up below windows. Please just make **Disable front panel jack detection** Marked and click OK in below screen.



Done.

**Avalue Technology Inc.**

7F, 228, Lian-Cheng Road, Chung Ho City, Taipei, Taiwan R.O.C.

www.avalue.com.tw  
sales@avalue.com.tw  
Tel:+886-2-82262345  
Fax:+886-2-82262777

Avalue Europe  
sales.europe@avalue.com.tw  
Tel: +45-7025-0310  
Fax: +45-4975-5026

Avalue USA  
sales@avalue-usa.com  
Tel: +1-732-578-0200  
Fax: +1-732-578-0250

BCM Advanced Research  
BCM5ales@bcmcom.com  
Tel: +1-949-470-1888  
Fax: +1-949-470-0971

Avalue China  
sales.china@avalue.com.cn  
Tel: +86-21-5426-3399  
Fax: +86-21-6495-0370