

Application Note

Subject : Standard FPC-08W04 COM2 Modified for support RS-422/485 function.

FAQ Document No: H13003	Date: 2013/03/14
Model Name: FPC-08W04	Rev: A1

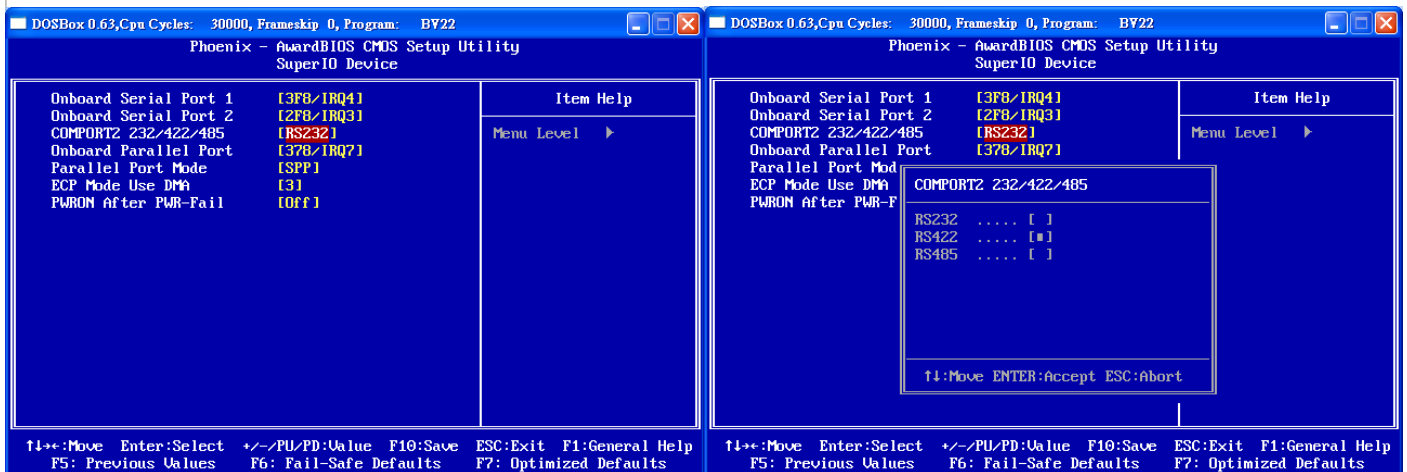
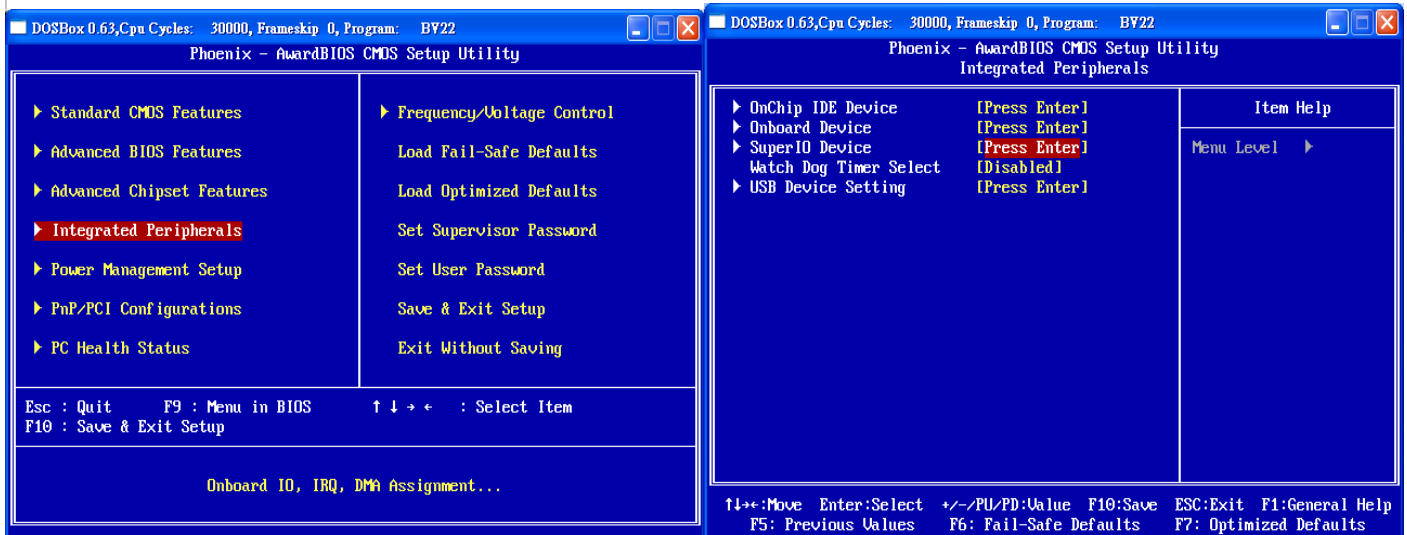
Category: General H/W S/W Others,

Purpose :

Standard FPC-08W04 COM2 HW/BIOS default configured as RS-232 Mode. This SOP is guide customer how to change HW/BIOS to make FPC-08W04 COM2 port support RS/422/485 function.

For change FPC-08W04 COM2 function as 422/485, It required BIOS and COM2 cable modifications.

1. BIOS modification is required. Please follow below screen-shoot for adjust BIOS and SAVE BIOS.



Avalue Technology Inc.

7F, 228, Lian-Cheng Road, Chung Ho City, Taipei, Taiwan R.O.C.

www.avalue.com.tw
 sales@avalue.com.tw
 Tel:+886-2-82262345
 Fax:+886-2-82262777

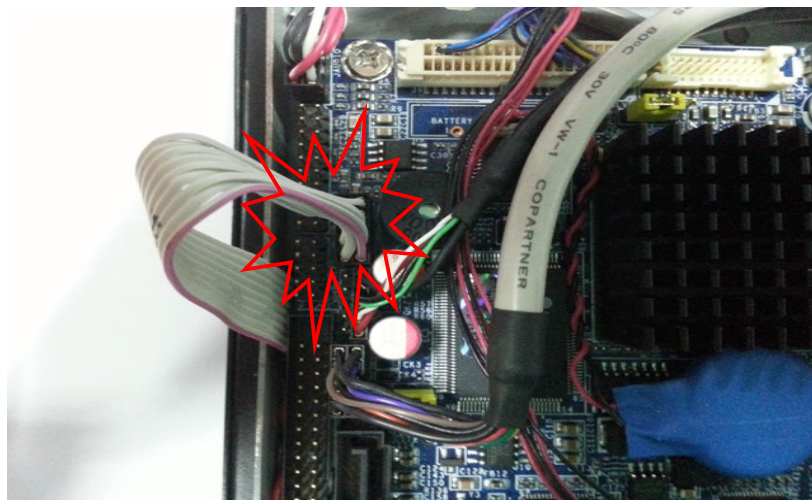
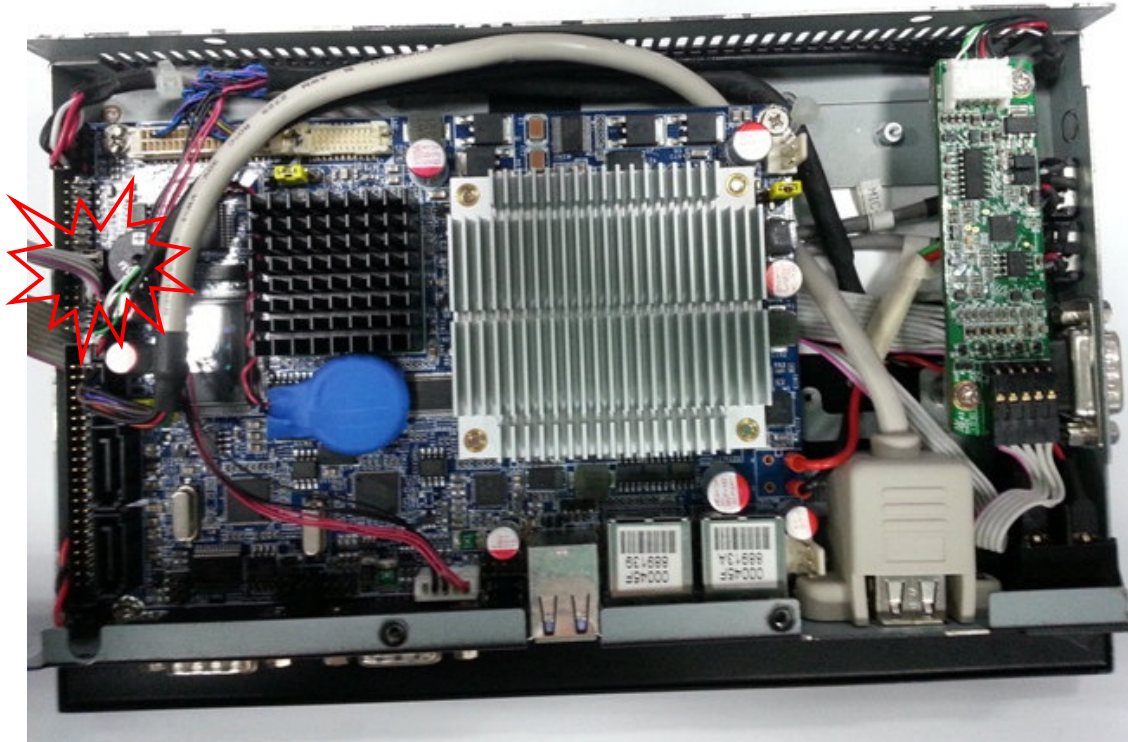
Avalue Europe
 sales.europe@avalue.com.tw
 Tel: +45-7025-0310
 Fax: +45-4975-5026

Avalue USA
 sales@avalue-usa.com
 Tel: +1-732-578-0200
 Fax: +1-732-578-0250

BCM Advanced Research
 BCMSales@bcmcom.com
 Tel: +1-949-470-1888
 Fax: +1-949-470-0971

Avalue China
 sales.china@avalue.com.cn
 Tel: +86-21-5426-3399
 Fax: +86-21-6495-0370

- 2. COM2 flat Cable changing location is required.
 - a. Please find COM2 flat cable first. Unplug the flat cable from Pin header.



Avalue Technology Inc.

www.avalue.com.tw
sales@avalue.com.tw
Tel:+886-2-82262345
Fax:+886-2-82262777

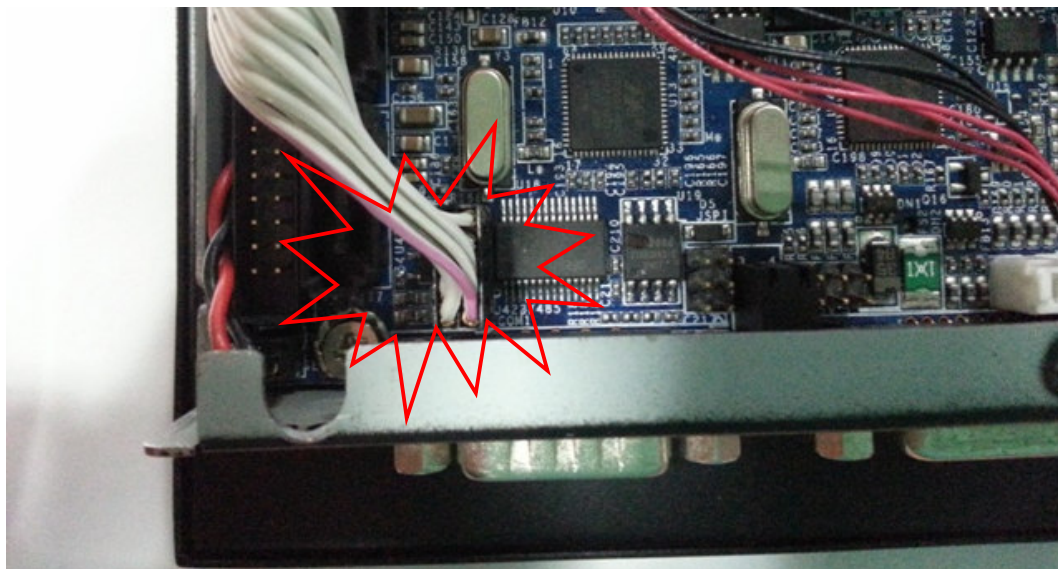
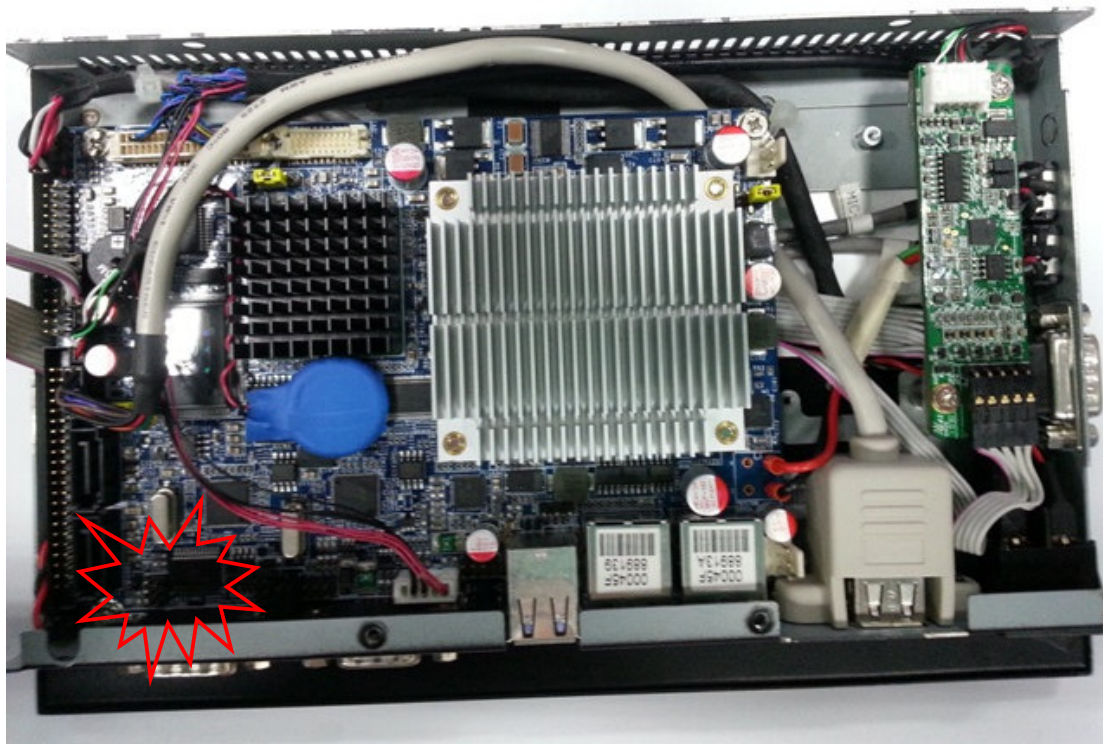
Avalue Europe
sales.europe@avalue.com.tw
Tel: +45-7025-0310
Fax: +45-4975-5026

Avalue USA
sales@avalue-usa.com
Tel: +1-732-578-0200
Fax: +1-732-578-0250

7F, 228, Lian-Cheng Road, Chung Ho City, Taipei, Taiwan R.O.C.
BCM Advanced Research
BCMSales@bcmcom.com
Tel: +1-949-470-1888
Fax: +1-949-470-0971

Avalue China
sales.china@avalue.com.cn
Tel: +86-21-5426-3399
Fax: +86-21-6495-0370

b. Find new location for J422/485. Plug the flat cable into this 6 Pins Pin-header.



Note: Please Notice the Red wire is connected to J422/485 pin header's Pin1.(Just like above picture shows)

Avalue Technology Inc.

www.avalue.com.tw
sales@avalue.com.tw
Tel:+886-2-82262345
Fax:+886-2-82262777

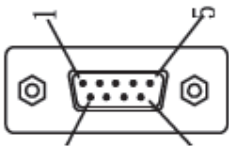
Avalue Europe
sales.europe@avalue.com.tw
Tel: +45-7025-0310
Fax: +45-4975-5026

Avalue USA
sales@avalue-usa.com
Tel: +1-732-578-0200
Fax: +1-732-578-0250

7F, 228, Lian-Cheng Road, Chung Ho City, Taipei, Taiwan R.O.C.
BCM Advanced Research
BCMSales@bcmcom.com
Tel: +1-949-470-1888
Fax: +1-949-470-0971

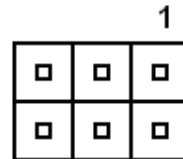
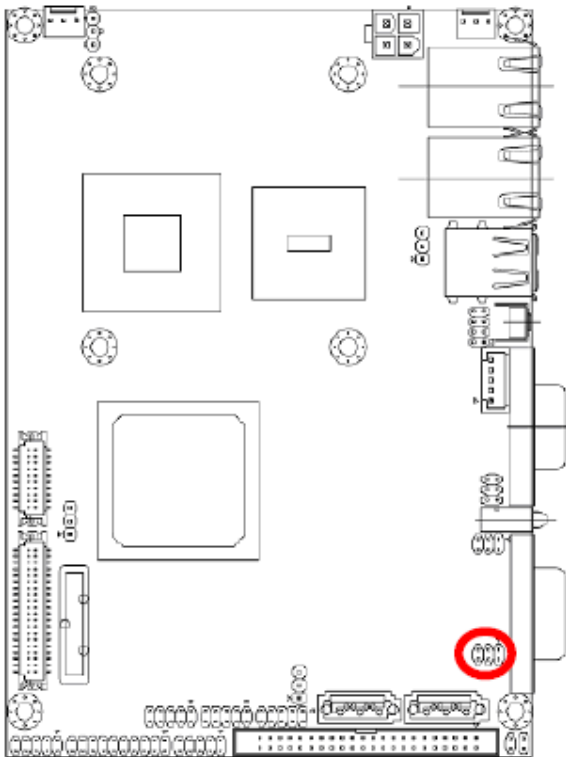
Avalue China
sales.china@avalue.com.cn
Tel: +86-21-5426-3399
Fax: +86-21-6495-0370

3. The chassis COM2 connector is remapping as below diagram's mapping.



1. TXD-	2. RXD-	3. TXD+	4. RXD+	5. +5V
6. GND		7. NC	8. NC	9. NC

2.3.10 Serial Port 2 in RS-422/485 (J422/485)



Signal	PIN	PIN	Signal
TxD-	1	2	RxD-
TxD+	3	4	RxD+
+5V	5	6	GND

Avalue Technology Inc.

www.avalue.com.tw
 sales@avalue.com.tw
 Tel: +886-2-82262345
 Fax: +886-2-82262777

Avalue Europe
 sales.europe@avalue.com.tw
 Tel: +45-7025-0310
 Fax: +45-4975-5026

Avalue USA
 sales@avalue-usa.com
 Tel: +1-732-578-0200
 Fax: +1-732-578-0250

7F, 228, Lian-Cheng Road, Chung Ho City, Taipei, Taiwan R.O.C.
 BCM Advanced Research
 BCM5Sales@bcmcom.com
 Tel: +1-949-470-1888
 Fax: +1-949-470-0971

Avalue China
 sales.china@avalue.com.cn
 Tel: +86-21-5426-3399
 Fax: +86-21-6495-0370