



FAQ / Application Note

Subject : How to do RAID0 function for Intel QM57 Chipset

FAQ Document No: S12019

Date: 2012/10/05

Model Name. ECM-QM57,EPI-QM57,ESM-QM57,
EMX-QM57,EPS-QM57

Rev. A1

Category: General H/W S/W Others, Application

Purpose: How setting RAID0 function in Windows Server 2008 R2 x64 ChnSimp language.

1. SATA HDD device:

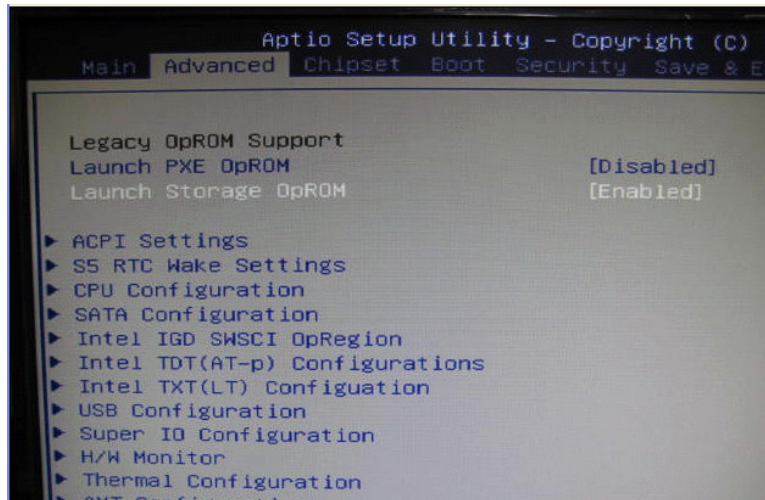
- SATA Port 1: Seagate 160GB HDD ST91603314AS S/N: 6VCXQBPW
- SATA Port 2: Seagate 160GB HDD ST91603314AS S/N: 6VCW40ZV

2. Setting RAID0 function:

Before Power ON, please install your two SATA HDD to SATA Port1 and Port2 slot.

After Power ON then press Del button into BIOS setup utility.

a. Advanced / Launch Storage OpROM→ Enable



Avalue Technology Inc.

7F, 228, Lian-Cheng Road, Chung Ho City, Taipei, Taiwan R.O.C.

www.avalue.com.tw
sales@avalue.com.tw
Tel:+886-2-82262345
Fax:+886-2-82262777

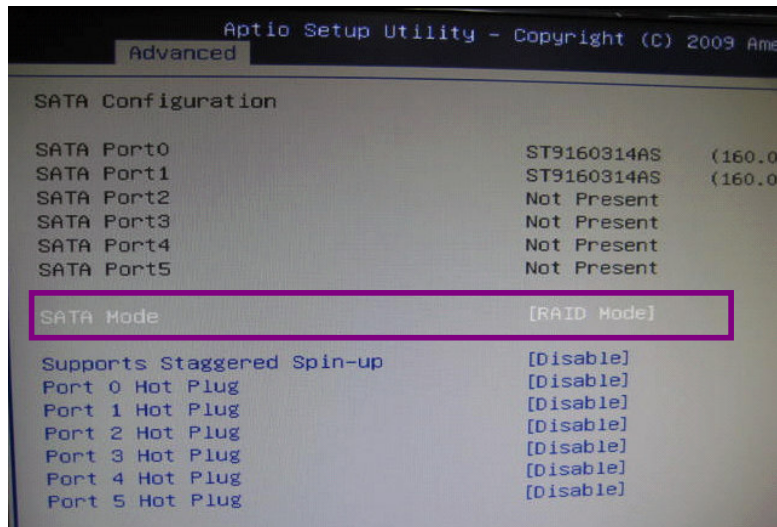
Avalue Europe
sales.europe@avalue.com.tw
Tel: +45-7025-0310
Fax: +45-4975-5026

Avalue USA
sales@avalue-usa.com
Tel: +1-732-578-0200
Fax: +1-732-578-0250

BCM Advanced Research
BCMSales@bcmcom.com
Tel: +1-949-470-1888
Fax: +1-949-470-0971

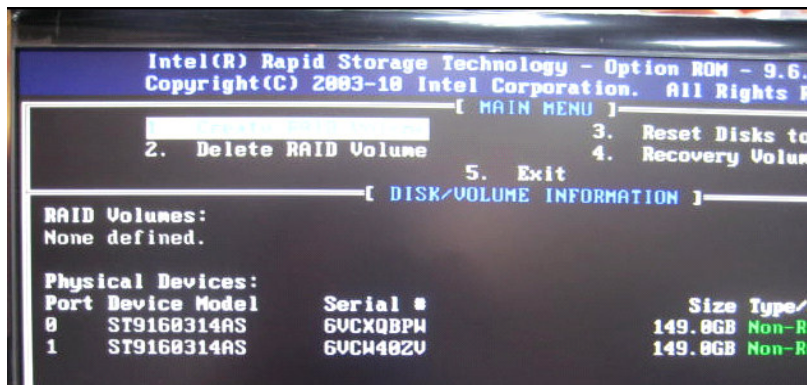
Avalue China
sales.china@avalue.com.cn
Tel: +86-21-5426-3399
Fax: +86-21-6495-0370

b. Advanced / SATA Configuration / SATA mode → RAID Mode



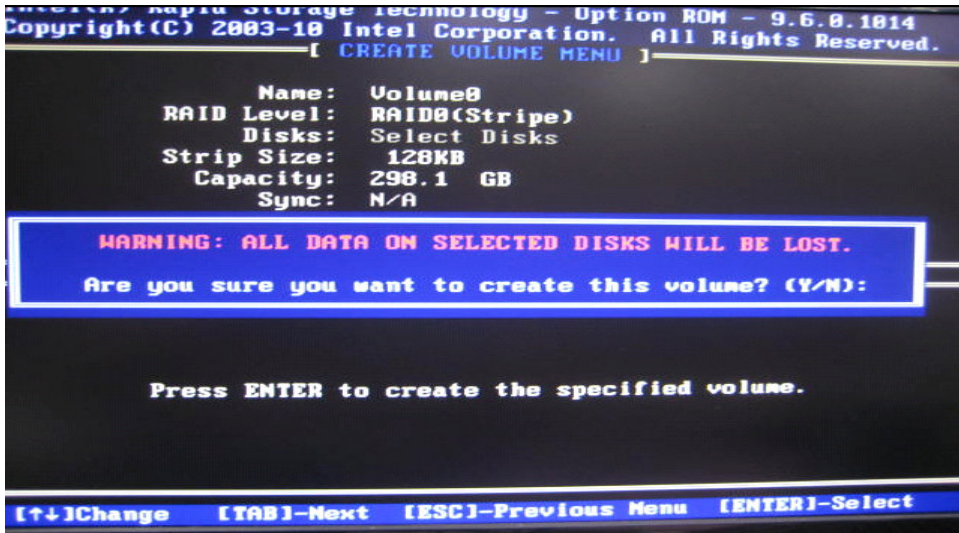
c. Save changes and exit BIOS setup.

d. Click “Ctrl+I” into “Intel® Rapid Storage Technology” Utility → “Create RAID Volume”

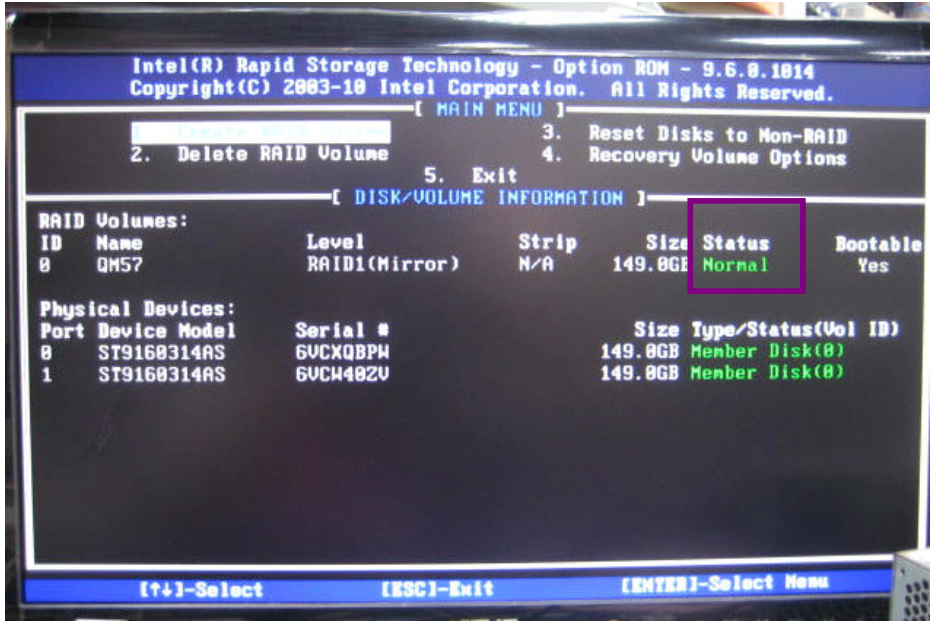


Example: Name is Volume0, RAID Level: RAID0(Stripe)

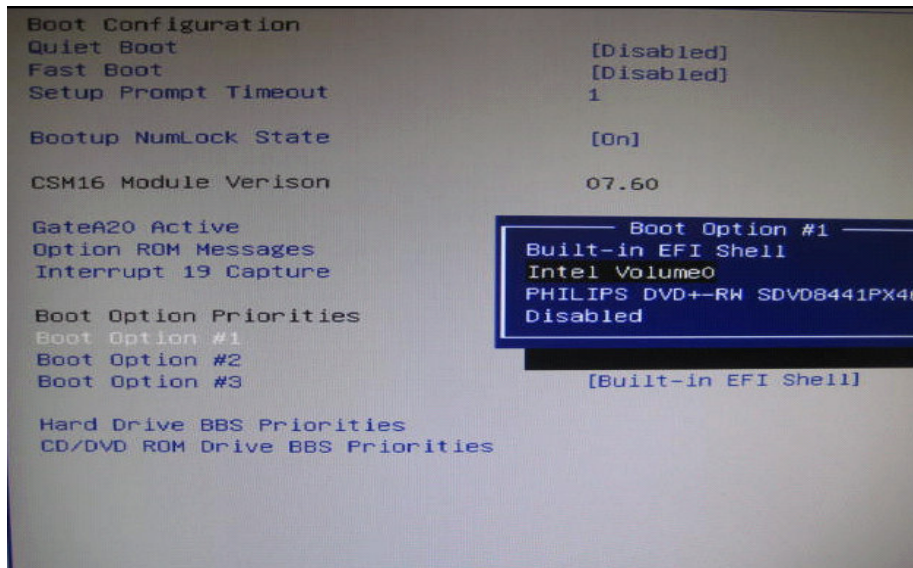




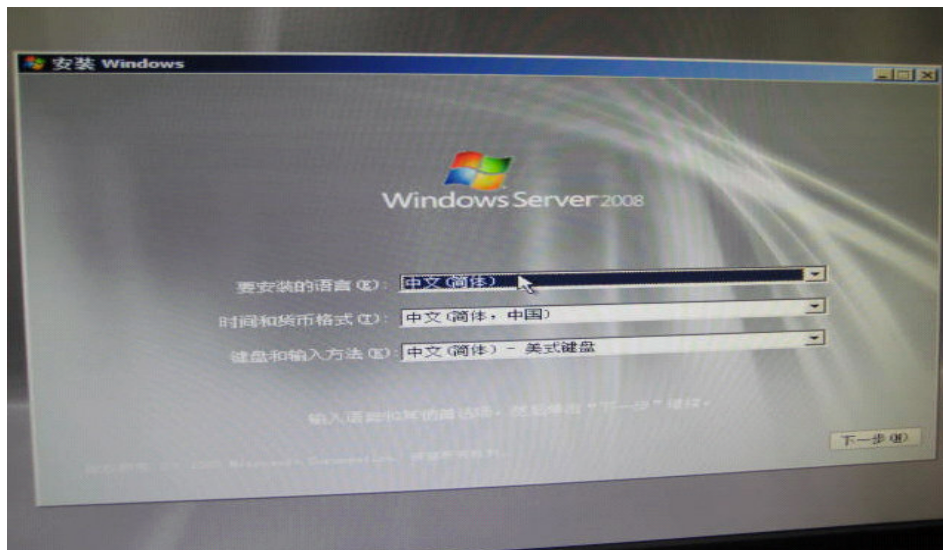
RAID status is "Normal"



e. You can found “Intel Volume0” in boot storage list of BIOS setup utility.



3. Start to install Windows Server 2008 R2 x64 OS from CD-ROM.



Avalue Technology Inc.

7F, 228, Lian-Cheng Road, Chung Ho City, Taipei, Taiwan R.O.C.

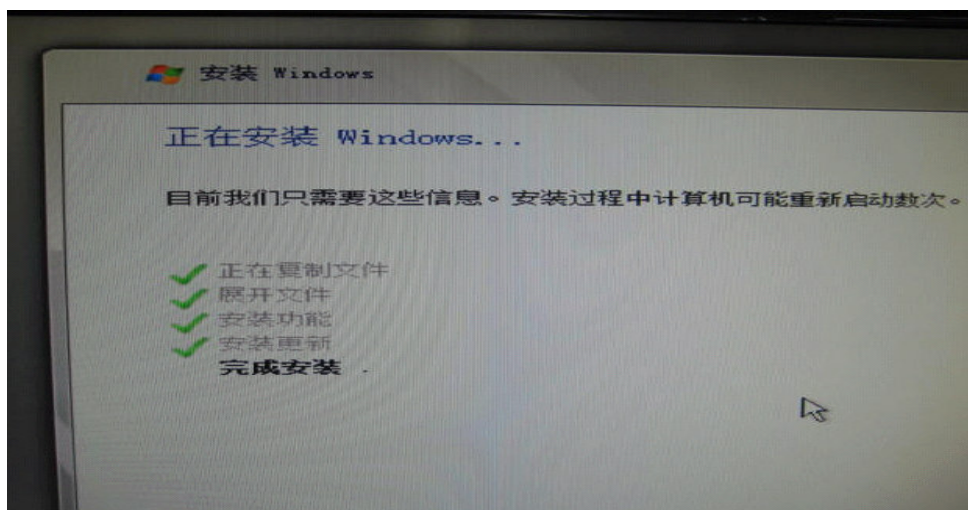
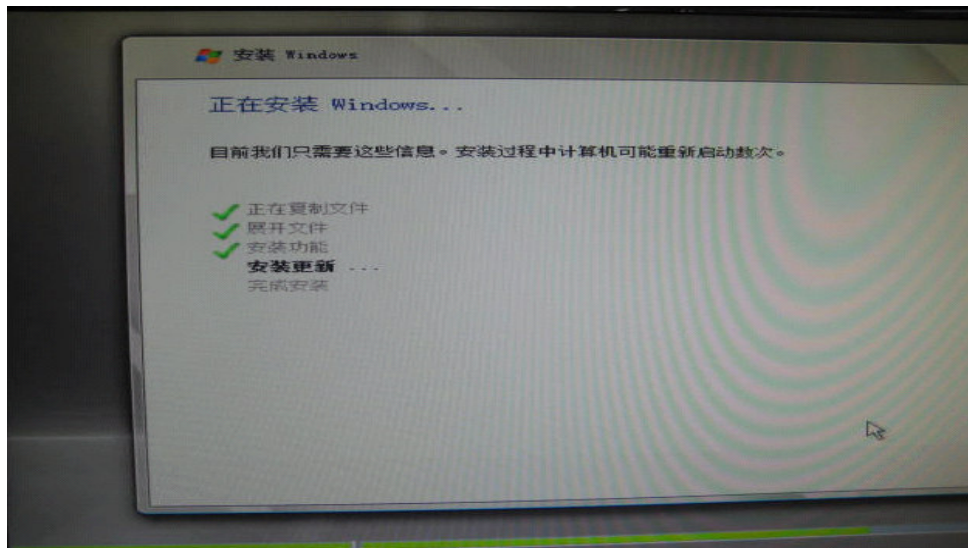
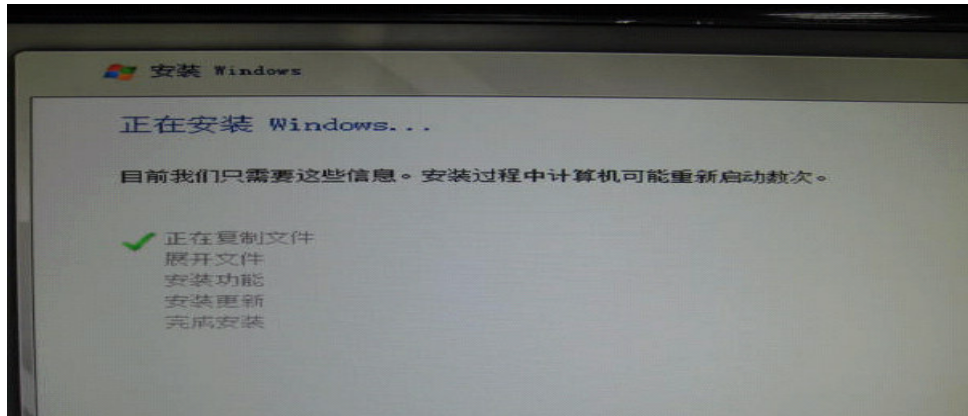
www.avalue.com.tw
 sales@avalue.com.tw
 Tel:+886-2-82262345
 Fax:+886-2-82262777

Avalue Europe
 sales.europe@avalue.com.tw
 Tel: +45-7025-0310
 Fax: +45-4975-5026

Avalue USA
 sales@avalue-usa.com
 Tel: +1-732-578-0200
 Fax: +1-732-578-0250

BCM Advanced Research
 BCM5Sales@bcmcom.com
 Tel: +1-949-470-1888
 Fax: +1-949-470-0971

Avalue China
 sales.china@avalue.com.cn
 Tel: +86-21-5426-3399
 Fax: +86-21-6495-0370



Avalue Technology Inc.

www.avalue.com.tw
sales@avalue.com.tw
Tel:+886-2-82262345
Fax:+886-2-82262777

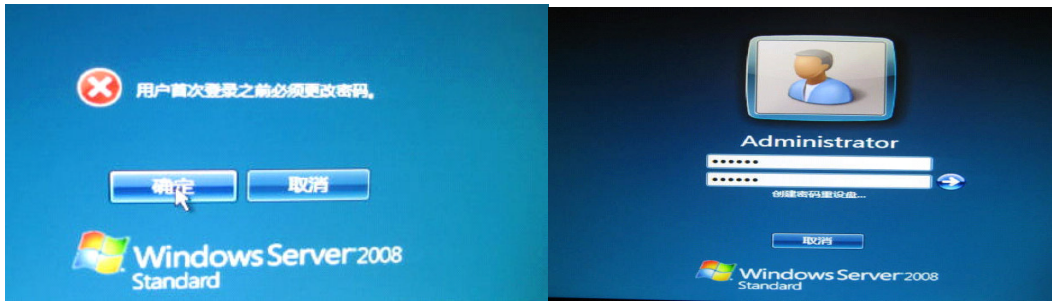
Avalue Europe
sales.europe@avalue.com.tw
Tel: +45-7025-0310
Fax: +45-4975-5026

Avalue USA
sales@avalue-usa.com
Tel: +1-732-578-0200
Fax: +1-732-578-0250

7F, 228, Lian-Cheng Road, Chung Ho City, Taipei, Taiwan R.O.C.
BCM Advanced Research
BCMSales@bcmcom.com
Tel: +1-949-470-1888
Fax: +1-949-470-0971

Avalue China
sales.china@avalue.com.cn
Tel: +86-21-5426-3399
Fax: +86-21-6495-0370

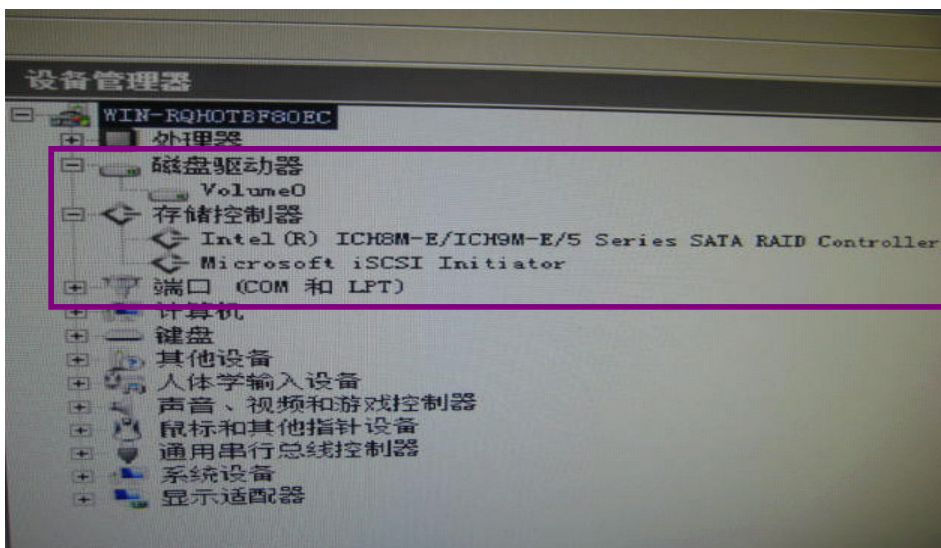
4. After install OS complete, please setting Password before into OS.



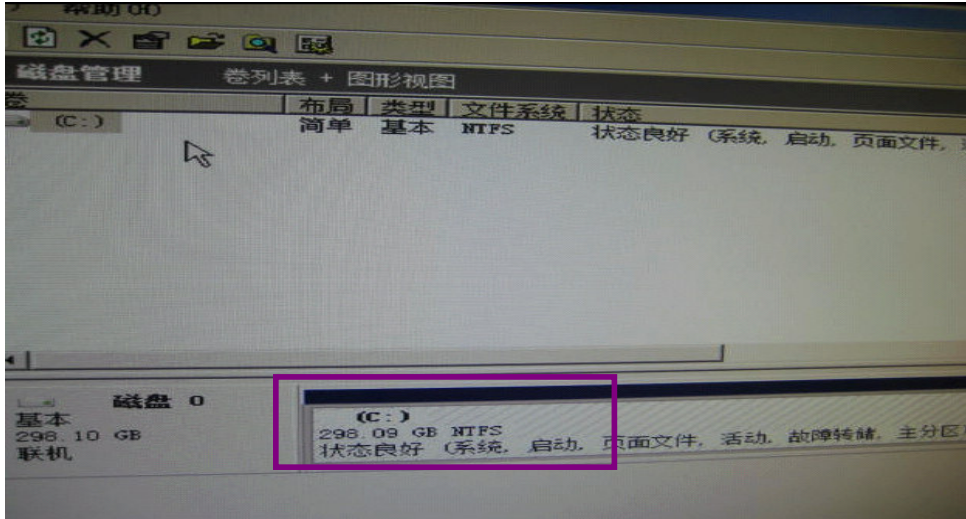
5. Install all Audio/Chipset/LAN/Video drivers in QM57 main board. Then start install Intel RAID driver” Intel Matrix Storage Manager→ iata_cd.exe”



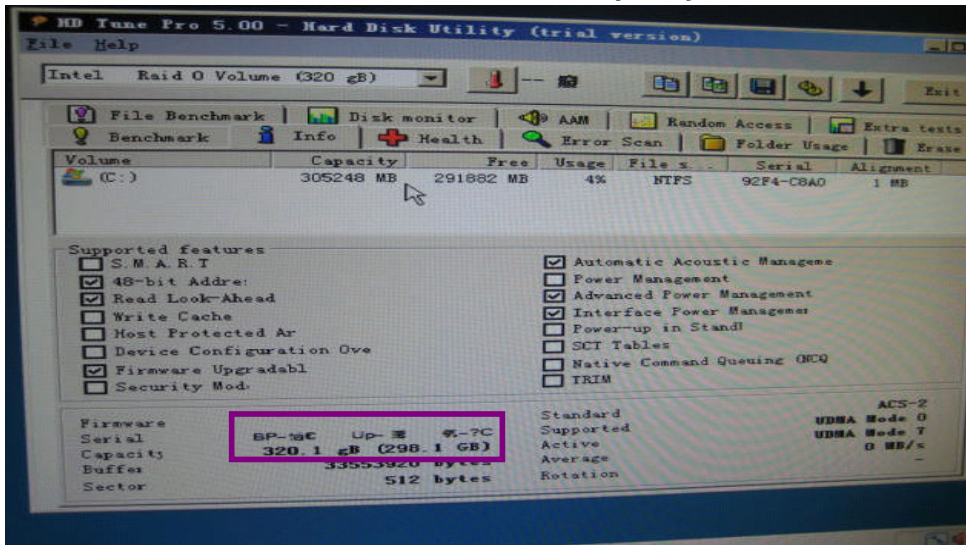
After install RAID driver, Storage controller display:



6. You can see Disk Manager is 298GB → RAID0 mode is working fine.



7. HD Tune Pro 5.0 software detected HDD capacity is “320GB”



-END

Avalue Technology Inc.

www.avalue.com.tw
 sales@avalue.com.tw
 Tel:+886-2-82262345
 Fax:+886-2-82262777

Avalue Europe
 sales.europe@avalue.com.tw
 Tel: +45-7025-0310
 Fax: +45-4975-5026

Avalue USA
 sales@avalue-usa.com
 Tel: +1-732-578-0200
 Fax: +1-732-578-0250

BCM Advanced Research
 BCM5ales@bcmcom.com
 Tel: +1-949-470-1888
 Fax: +1-949-470-0971

Avalue China
 sales.china@avalue.com.cn
 Tel: +86-21-5426-3399
 Fax: +86-21-6495-0370

7F, 228, Lian-Cheng Road, Chung Ho City, Taipei, Taiwan R.O.C.