



FAQ / Application Note

Subject : How to do RAID1 Rebuild function for Intel QM57 Chipset

FAQ Document No: S12015

Date: 2012/09/14

Model Name. ECM-QM57,EPI-QM57,ESM-QM57,
EMX-QM57,EPS-QM57

Rev. A1

Category: General H/W S/W Others, Application

Purpose: How setting RAID1 and Rebuild function in Windows Server 2008 R2 x64 ChnSimp language.

1. SATA HDD device:

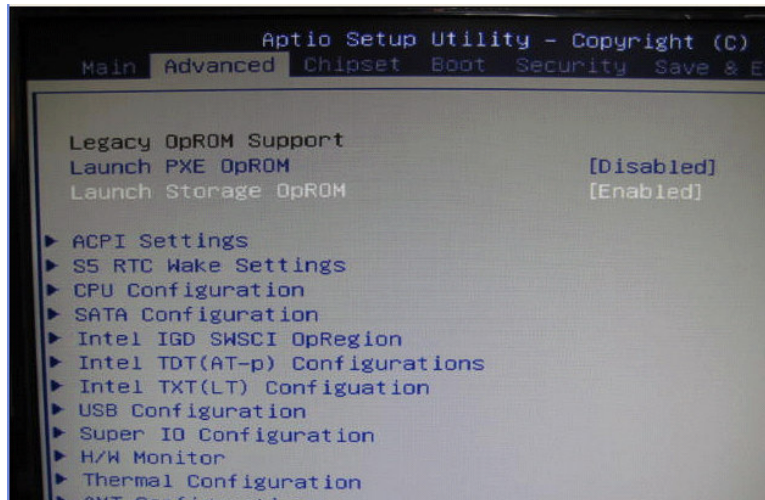
- SATA Port 1: Seagate 160GB HDD ST91603314AS S/N: 6VCXQBPW
- SATA Port 2: Seagate 160GB HDD ST91603314AS S/N: 6VCW40ZV

2. Setting RAID1 function:

Before Power ON, please install your two SATA HDD to SATA Port1 and Port2.

After Power ON then press Del button into BIOS setup utility.

a. Advanced / Launch Storage OpROM→ Enable



Avalue Technology Inc.

7F, 228, Lian-Cheng Road, Chung Ho City, Taipei, Taiwan R.O.C.

www.avalue.com.tw
sales@avalue.com.tw
Tel:+886-2-82262345
Fax:+886-2-82262777

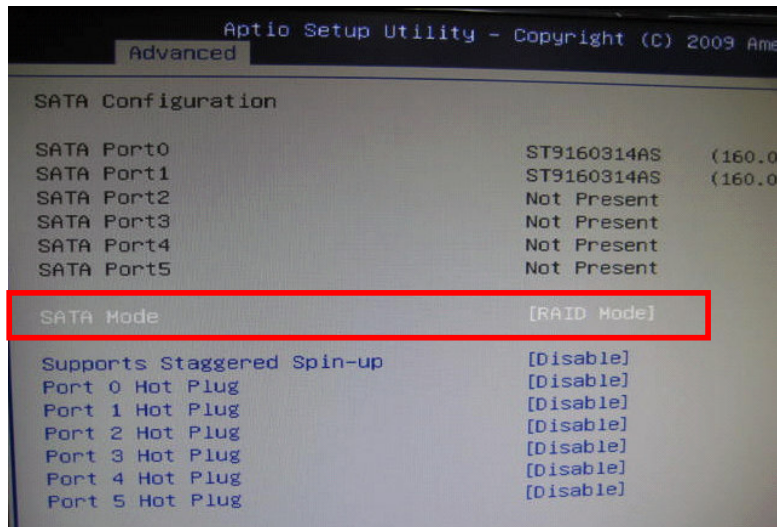
Avalue Europe
sales.europe@avalue.com.tw
Tel: +45-7025-0310
Fax: +45-4975-5026

Avalue USA
sales@avalue-usa.com
Tel: +1-732-578-0200
Fax: +1-732-578-0250

BCM Advanced Research
BCMSales@bcmcom.com
Tel: +1-949-470-1888
Fax: +1-949-470-0971

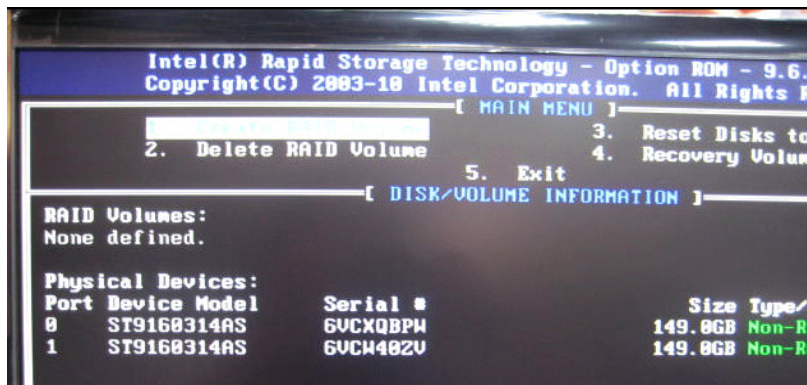
Avalue China
sales.china@avalue.com.cn
Tel: +86-21-5426-3399
Fax: +86-21-6495-0370

b. Advanced / SATA Configuration / SATA mode → RAID Mode



c. Save changes and exit BIOS setup.

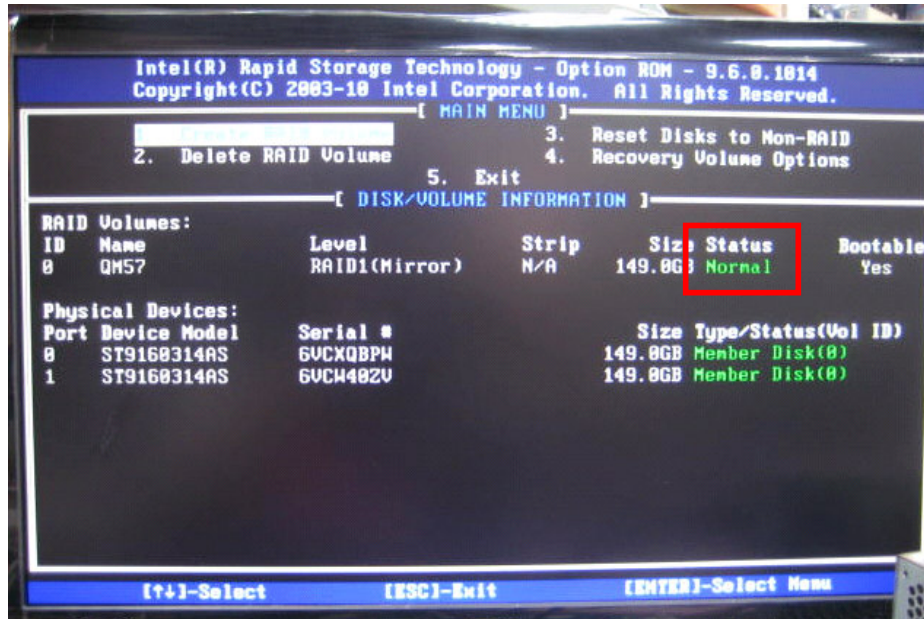
d. Click “Ctrl+I” into “Intel® Rapid Storage Technology” Utility → “Create RAID Volume”



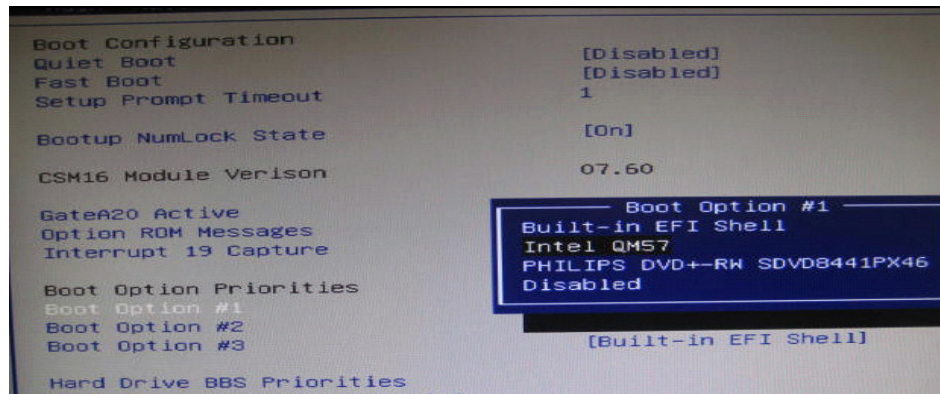
Example: Name is QM57, RAID Level: RAID1(Mirror)



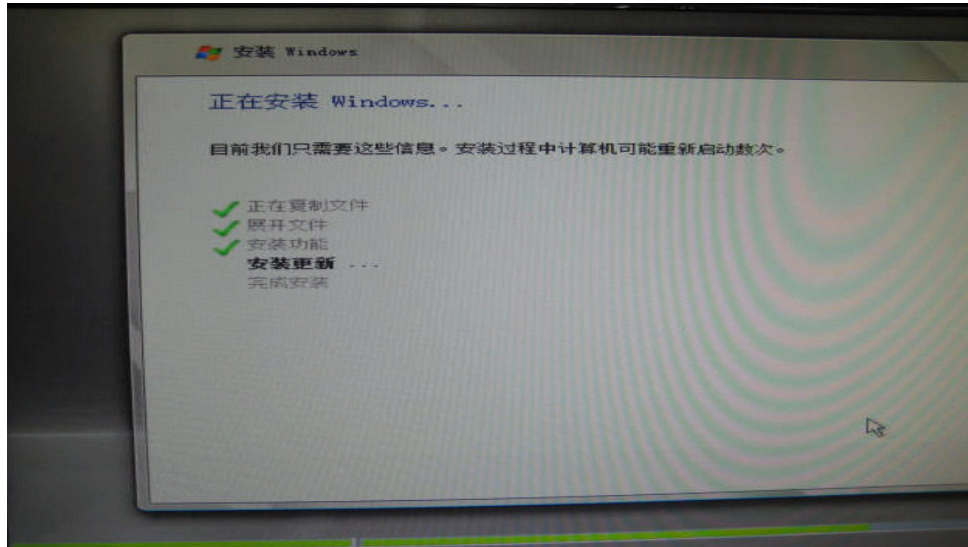
RAID status is "Normal"



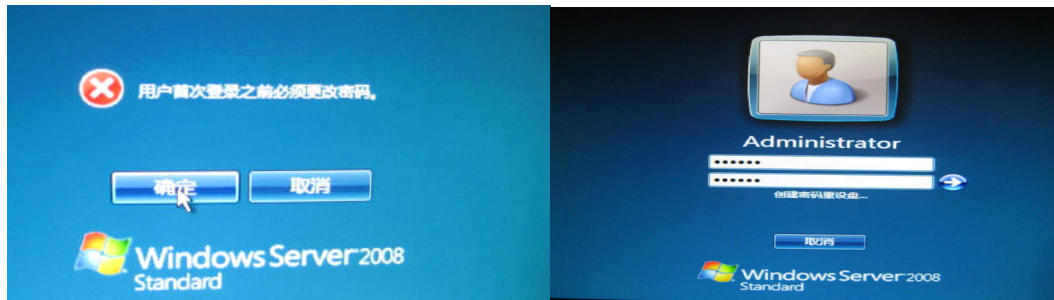
e. You can find "Intel QM57" in boot storage list of BIOS setup utility.



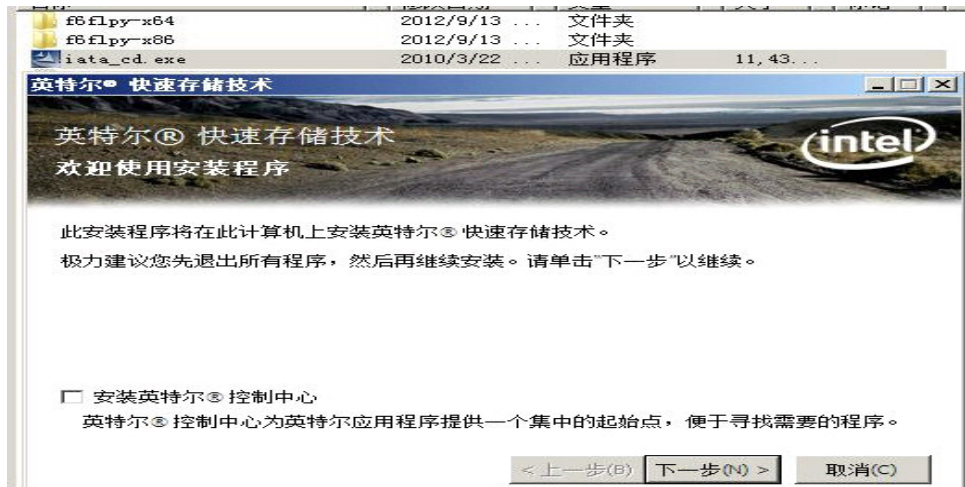
3. Start to install Windows Server 2008 R2 x64 OS from CD-ROM.



4. After install OS complete, please setting Password before into OS.



5. Install all Audio/Chipset/LAN /Video drivers in QM57 main board. Then start install Intel RAID driver” Intel Matrix Storage Manager→ iata_cd.exe”



Avalue Technology Inc.

7F, 228, Lian-Cheng Road, Chung Ho City, Taipei, Taiwan R.O.C.

www.avalu.com.tw
sales@avalu.com.tw
Tel:+886-2-82262345
Fax:+886-2-82262777

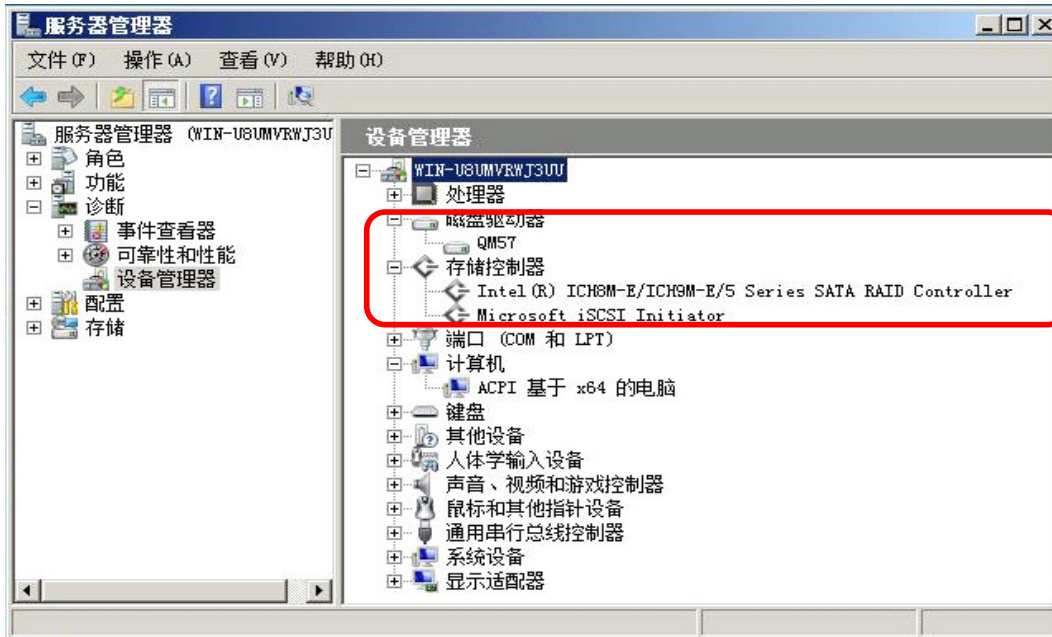
Avalue Europe
sales.europe@avalu.com.tw
Tel: +45-7025-0310
Fax: +45-4975-5026

Avalue USA
sales@avalu-usa.com
Tel: +1-732-578-0200
Fax: +1-732-578-0250

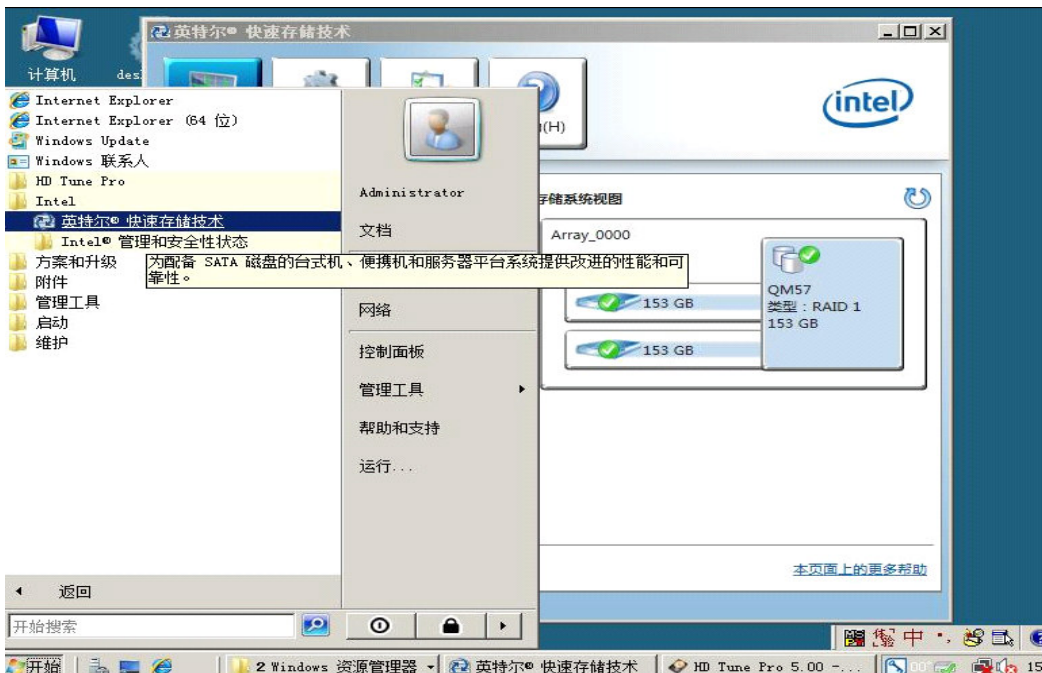
BCM Advanced Research
BCMSales@bcmcom.com
Tel: +1-949-470-1888
Fax: +1-949-470-0971

Avalue China
sales.china@avalu.com.cn
Tel: +86-21-5426-3399
Fax: +86-21-6495-0370

After install driver, Storage controller display:



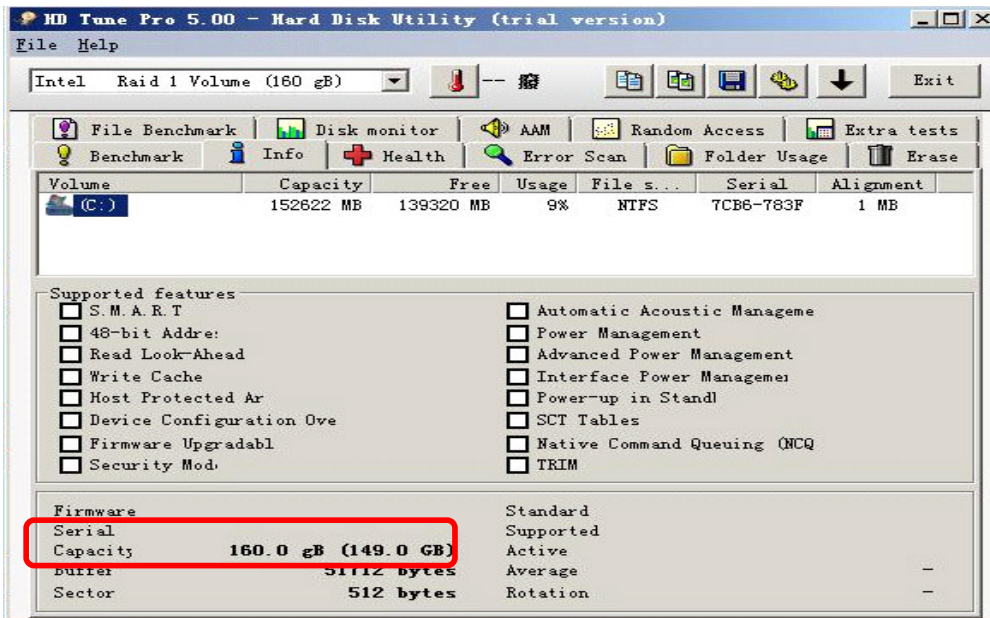
Open RAID Utility from Start Bar.



6. You can see RAID mode status and manager → **RAID1 mode is working fine.**



7. HD Tune Pro 5.0 software detected HDD capacity is “160GB”

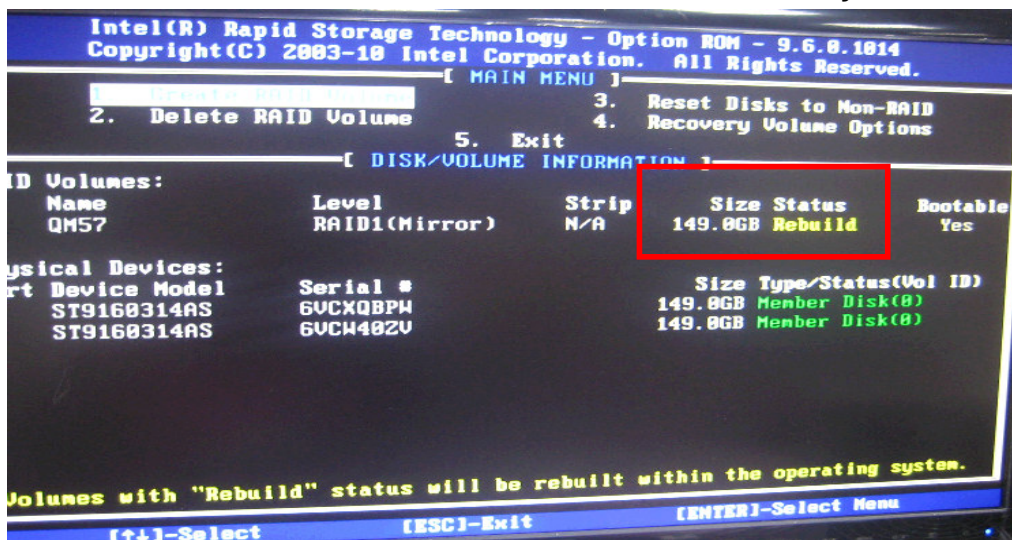


8. Normally Shutdown your PC.

9. Replace new SATA HDD in SATA port.

Please remember format your new HDD and rebuild MBR(Master boot record)

10. Power ON QM57 main board, Click “Ctrl+I” into “Intel® Rapid Storage Technology” Utility. And check RAID status was shown “Rebuild” automatically.



11. Restart QM57 main board and into Windows server 2008 OS,

12. Open RAID Utility from Start Bar, it will rebuild working automatically.

Avalue Technology Inc.

7F, 228, Lian-Cheng Road, Chung Ho City, Taipei, Taiwan R.O.C.

www.avalue.com.tw
sales@avalue.com.tw
Tel:+886-2-82262345
Fax:+886-2-82262777

Avalue Europe
sales.europe@avalue.com.tw
Tel: +45-7025-0310
Fax: +45-4975-5026

Avalue USA
sales@avalue-usa.com
Tel: +1-732-578-0200
Fax: +1-732-578-0250

BCM Advanced Research
BCM5ales@bcmcom.com
Tel: +1-949-470-1888
Fax: +1-949-470-0971

Avalue China
sales.china@avalue.com.cn
Tel: +86-21-5426-3399
Fax: +86-21-6495-0370

And you can see Rebuild process.

英特尔® 快速存储技术

状态(S) 管理(M) 首选项(P) 帮助(H)

当前状态
您的系统功能正常。

管理
单击存储系统视图中的任何要素以管理其属性。

Array_0000

- QM57 : 正在重建 : 完成 6%

存储系统视图

Array_0000
 名称 : Array_0000
 大小 : 305,255 MB
 可用空间 : 5 MB
 QM57
 类型 : RAID 1
 153 GB

本页面上的更多帮助

英特尔® 快速存储技术

状态(S) 管理(M) 首选项(P) 帮助(H)

当前状态
您的系统功能正常。

管理
单击存储系统视图中的任何要素以管理其属性。

Array_0000

- QM57 : 正在重建 : 完成 40%

存储系统视图

Array_0000
 QM57
 类型 : RAID 1
 153 GB

本页面上的更多帮助

Avalue Technology Inc.

www.avalue.com.tw
 sales@avalue.com.tw
 Tel:+886-2-82262345
 Fax:+886-2-82262777

Avalue Europe
 sales.europe@avalue.com.tw
 Tel: +45-7025-0310
 Fax: +45-4975-5026

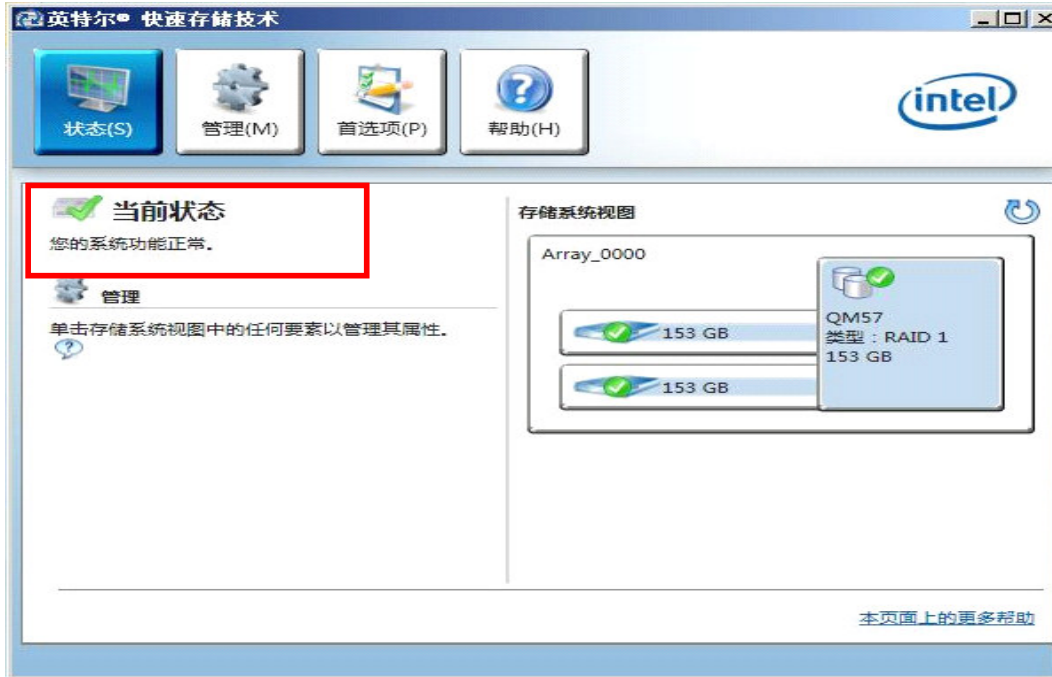
Avalue USA
 sales@avalue-usa.com
 Tel: +1-732-578-0200
 Fax: +1-732-578-0250

BCM Advanced Research
 BCM5ales@bcmcom.com
 Tel: +1-949-470-1888
 Fax: +1-949-470-0971

Avalue China
 sales.china@avalue.com.cn
 Tel: +86-21-5426-3399
 Fax: +86-21-6495-0370

7F, 228, Lian-Cheng Road, Chung Ho City, Taipei, Taiwan R.O.C.

13. When finished Rebuild new HDD 100%, the status shown “Your system is functioning normally”.



-END

Avalue Technology Inc.

www.avalue.com.tw
 sales@avalue.com.tw
 Tel: +886-2-82262345
 Fax: +886-2-82262777

Avalue Europe
 sales.europe@avalue.com.tw
 Tel: +45-7025-0310
 Fax: +45-4975-5026

Avalue USA
 sales@avalue-usa.com
 Tel: +1-732-578-0200
 Fax: +1-732-578-0250

BCM Advanced Research
 BCMSales@bcmcom.com
 Tel: +1-949-470-1888
 Fax: +1-949-470-0971

Avalue China
 sales.china@avalue.com.cn
 Tel: +86-21-5426-3399
 Fax: +86-21-6495-0370

7F, 228, Lian-Cheng Road, Chung Ho City, Taipei, Taiwan R.O.C.