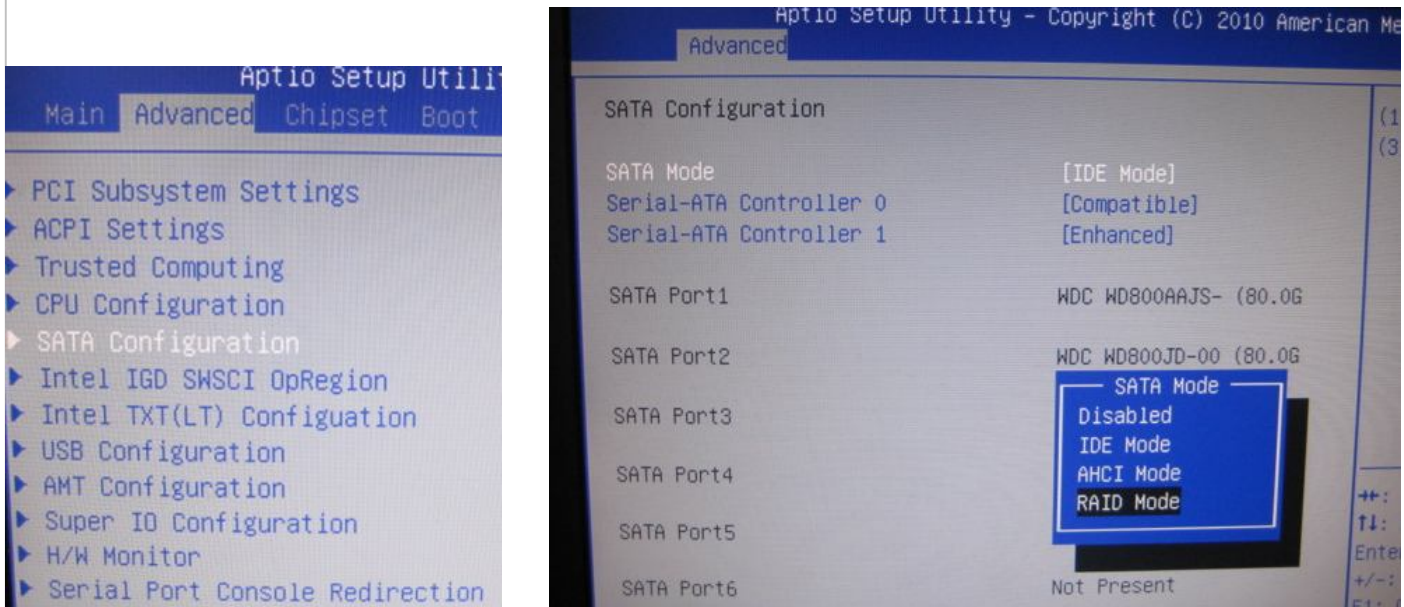


FAQ / Application Note

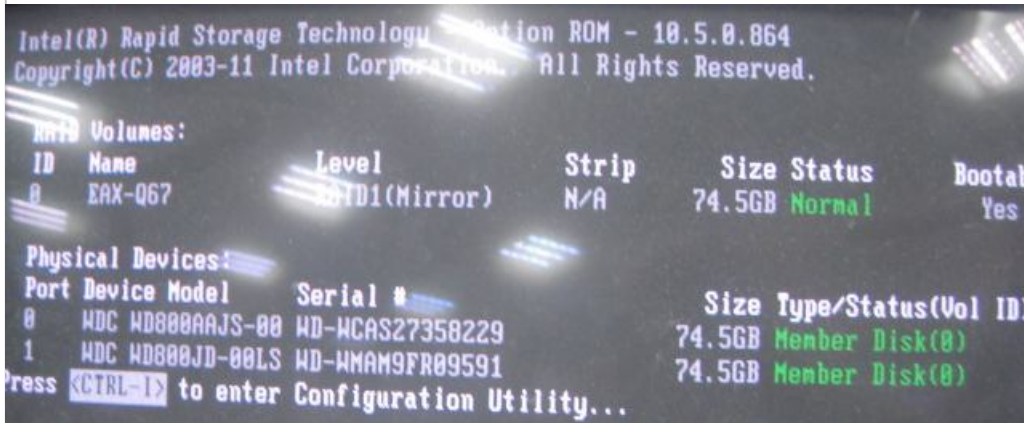
Subject : RAID 1 procedure for EAX-Q67 on Windows Server 2003 platform

FAQ Document No: S12008	Date: 2012/6/28
Model Name. EAX-Q67	Rev. A1
Category: <input type="checkbox"/> General <input type="checkbox"/> H/W <input checked="" type="checkbox"/> S/W <input type="checkbox"/> Others, <u>Installation</u>	
Purpose: Create RAID 1 for EAX-Q67 in Windows Server 2003 step by step	

1. Enter BIOS setting to set SATA Mode as “RAID Mode”, and then save BIOS setting and exit.



2. After rebooting, you will see that a tool for RAID is enabled, please press “Ctrl” + “T” on the keyboard to enter RAID tool.



3. Enter into RAID tool, you will see a menu as below.

Avalue Technology Inc.

7F, 228, Lian-Cheng Road, Chung Ho City, Taipei, Taiwan R.O.C.

www.avalue.com.tw
sales@avalue.com.tw
Tel:+886-2-82262345
Fax:+886-2-82262777

Avalue Europe
sales.europe@avalue.com.tw
Tel: +45-7025-0310
Fax: +45-4975-5026

Avalue USA
sales@avalue-usa.com
Tel: +1-949-470-1888
Fax: +1-949-470-0971

BCM Advanced Research
BCMSales@bcmcom.com
Tel: +1-949-470-1888
Fax: +1-949-470-0971

Avalue China
sales.china@avalue.com.cn
Tel: +86-21-5426-3399
Fax: +86-21-6495-0370



4. Choose “1.Create RAID Volume” to create a RAID”.



5. In “CREATE VOLUME MENU” as below, please create the RAID name and RAID Level (type), then choose “Create Volume” for Creation.

For example, name is “EAX-Q67”, and RAID Level is “RAID1 (Mirror)”.





```
Name: EAX-Q67
RAID Level: RAID1(Mirror)
Disks: Select Disks
Strip Size: N/A
Capacity: 74.5 GB
Sync: N/A
Create Volume
```

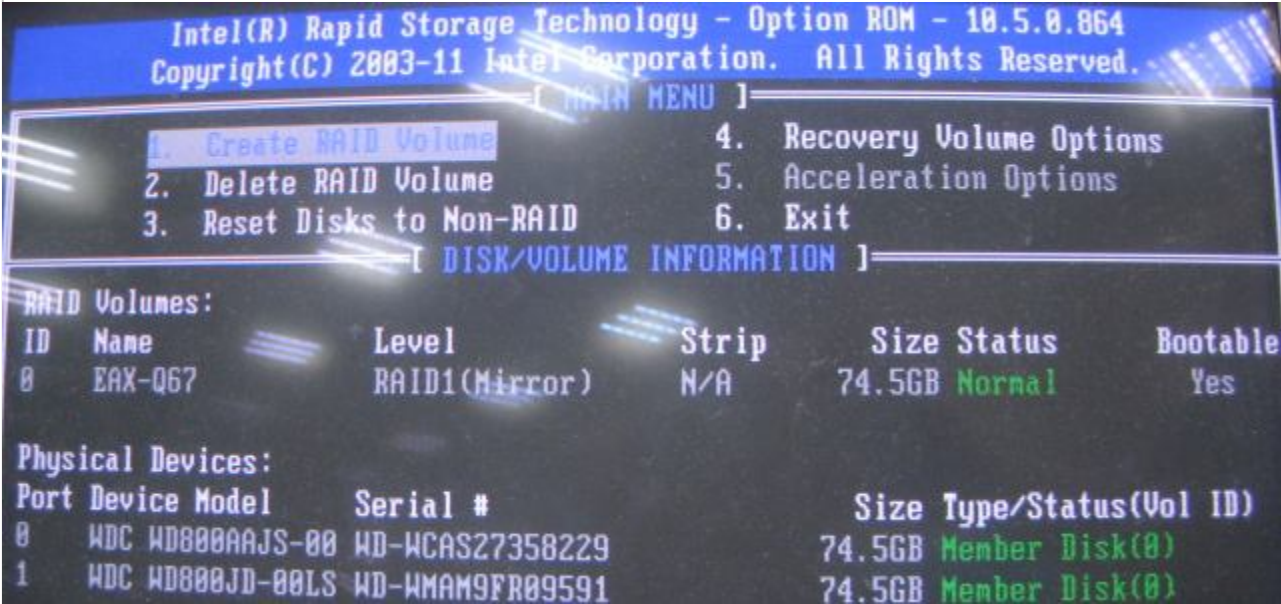
```
Name: EAX-Q67
RAID Level: RAID1(Mirror)
Disks: Select Disks
Strip Size: N/A
Capacity: 74.5 GB
Sync: N/A
Create Volume
```

```
Name: EAX-Q67
RAID Level: RAID1(Mirror)
Disks: Select Disks
Strip Size: N/A
Capacity: 74.5 GB
Sync: N/A
```

WARNING: ALL DATA ON SELECTED DISKS WILL BE LOST.

Are you sure you want to create this volume? (Y/N):

6. You will see that a “RAID1” is created as below, and then exit the RAID tool.



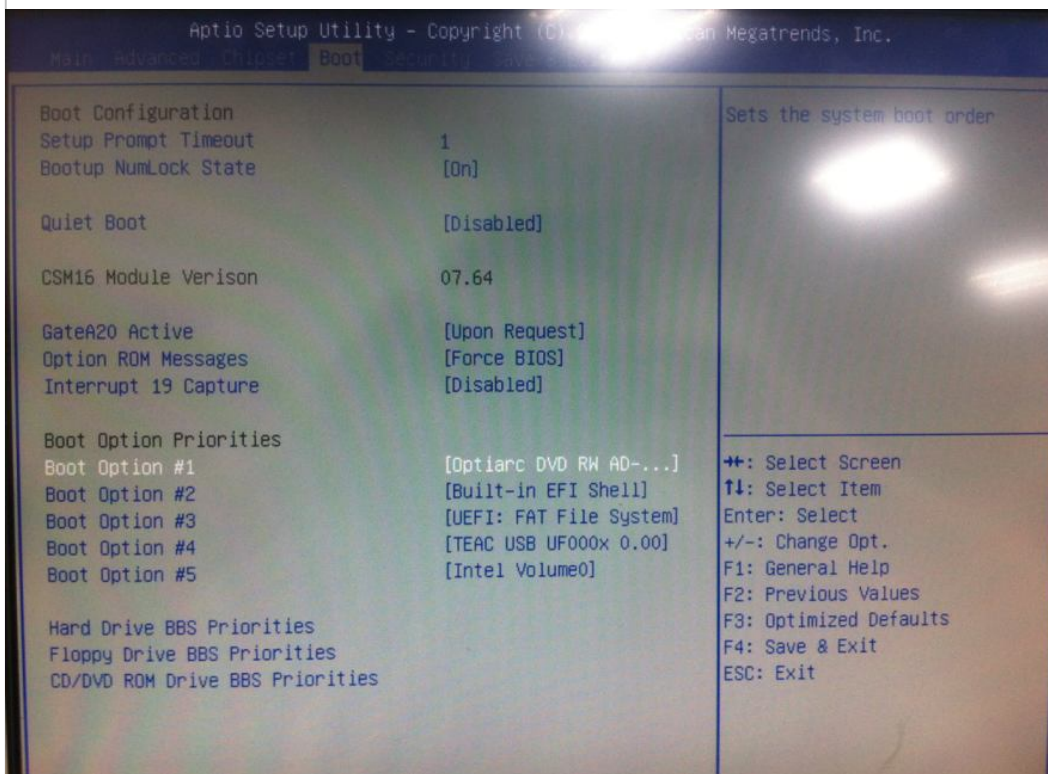
7. Prepare an USB floppy and a 1.44 floppy disk. We need to put the SATA driver into the USB floppy.



8. Expand the RAID driver of SATA from bundled disc as below and copy these files into the 1.44 floppy disk.



9. Put a Windows Server 2003 installation CD disk into an DVD ROM, and select DVD-ROM in First Boot Device.



Avalue Technology Inc.

7F, 228, Lian-Cheng Road, Chung Ho City, Taipei, Taiwan R.O.C.

www.avalue.com.tw
sales@avalue.com.tw
Tel:+886-2-82262345
Fax:+886-2-82262777

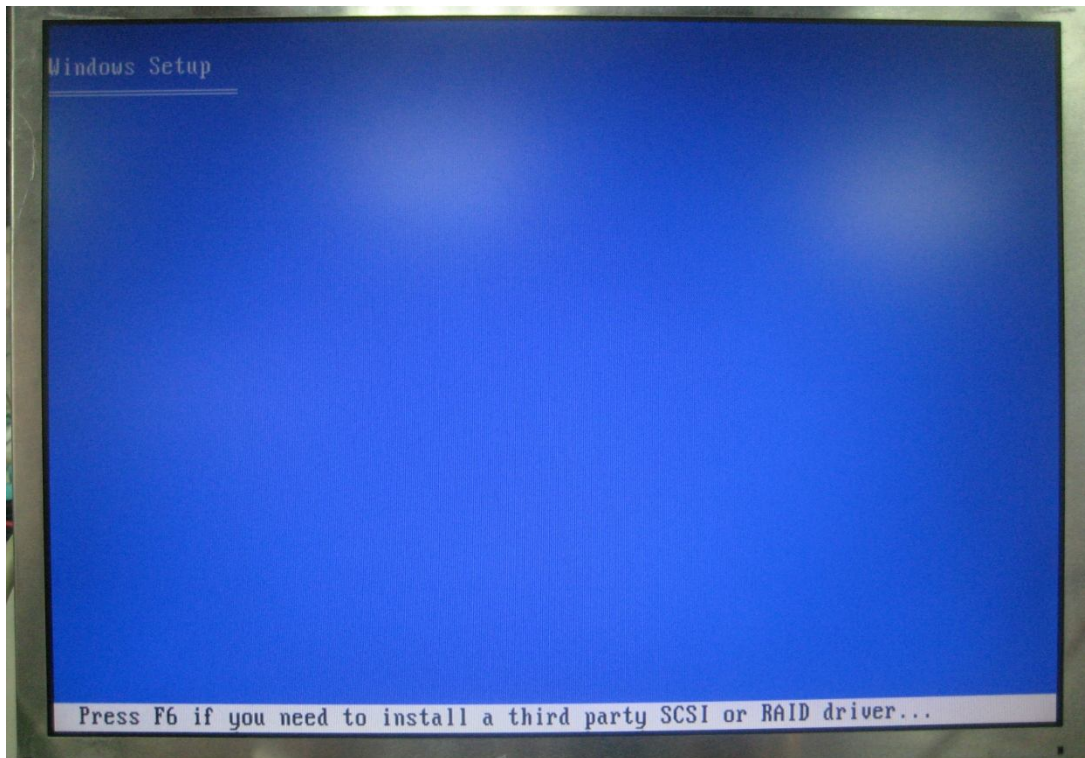
Avalue Europe
sales.europe@avalue.com.tw
Tel: +45-7025-0310
Fax: +45-4975-5026

Avalue USA
sales@avalue-usa.com
Tel: +1-732-578-0200
Fax: +1-732-578-0250

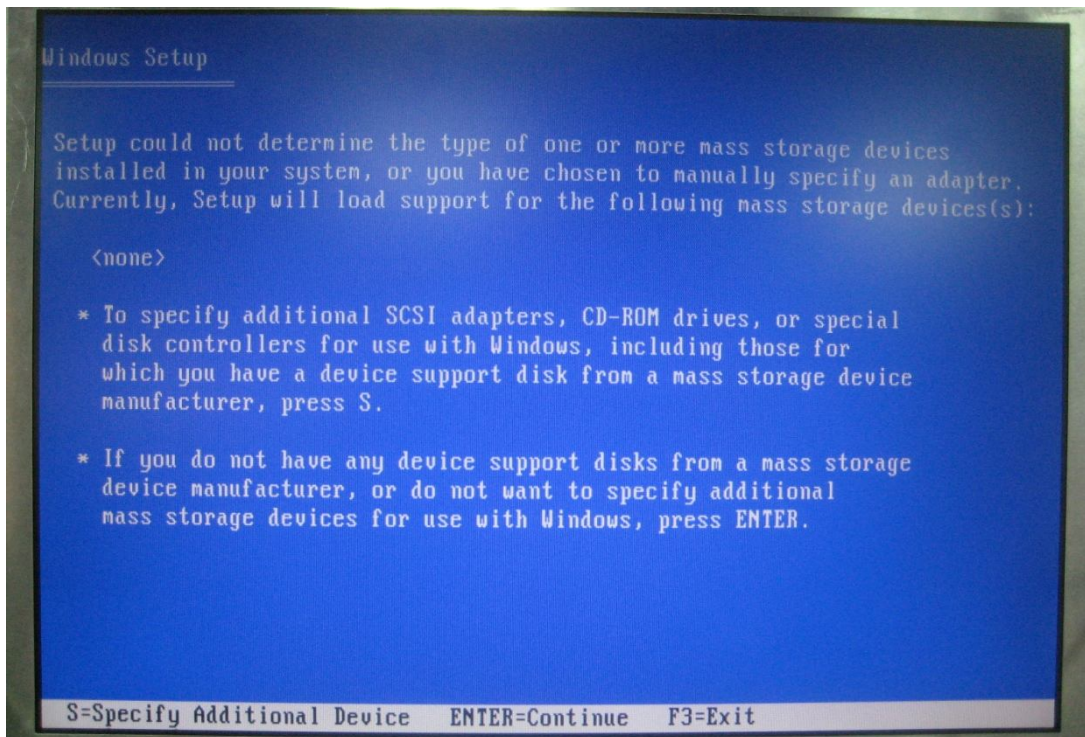
BCM Advanced Research
BCMSales@bcm.com
Tel: +1-949-470-1888
Fax: +1-949-470-0971

Avalue China
sales.china@avalue.com.cn
Tel: +86-21-5426-3399
Fax: +86-21-6495-0370

10. Press “F6” on the keyboard in the beginning of installing procedure for windows 2003 Server.

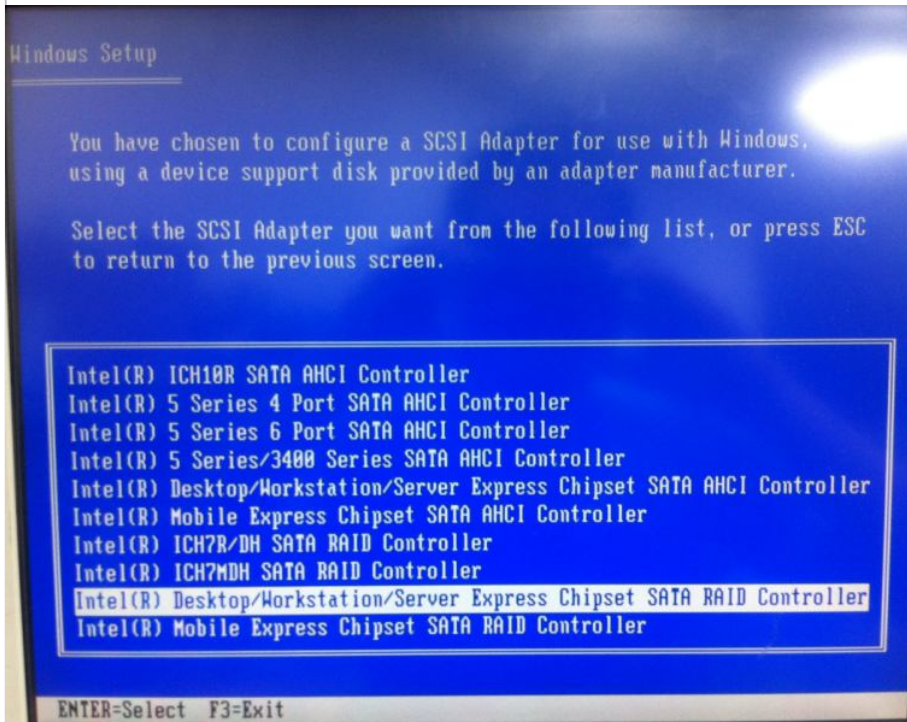


11. Press “S” to specify devices connecting to EAX-Q67.





12. Choose Intel(R) Desktop/Workstation/Server express chipset SATA raid controller.



13. Press "Enter" to skip as we have already specified the device.



Avalue Technology Inc.

www.avalu.com.tw
sales@avalu.com.tw
Tel:+886-2-82262345
Fax:+886-2-82262777

Avalue Europe
sales.europe@avalu.com.tw
Tel: +45-7025-0310
Fax: +45-4975-5026

Avalue USA
sales@avalu-usa.com
Tel: +1-732-578-0200
Fax: +1-732-578-0250

BCM Advanced Research
BCMSales@bcmcom.com
Tel: +1-949-470-1888
Fax: +1-949-470-0971

Avalue China
sales.china@avalu.com.cn
Tel: +86-21-5426-3399
Fax: +86-21-6495-0370

7F, 228, Lian-Cheng Road, Chung Ho City, Taipei, Taiwan R.O.C.



14. Press “Enter” and follow the standard procedure to install Windows server 2003.

15. After installation, we need to install the drivers for the device. Before that, we need to download and install “Update for Windows Server 2003” and “.Net framework” from Microsoft web-site.

Note: <http://support.microsoft.com/kb/901105/en-us>

16. Then, we could install the driver from bundled disc individually.

(Please use the XP driver to install)



17. Please also install the RAID utility.



Avalue Technology Inc.

www.avalue.com.tw
sales@avalue.com.tw
Tel:+886-2-82262345
Fax:+886-2-82262777

Avalue Europe
sales.europe@avalue.com.tw
Tel: +45-7025-0310
Fax: +45-4975-5026

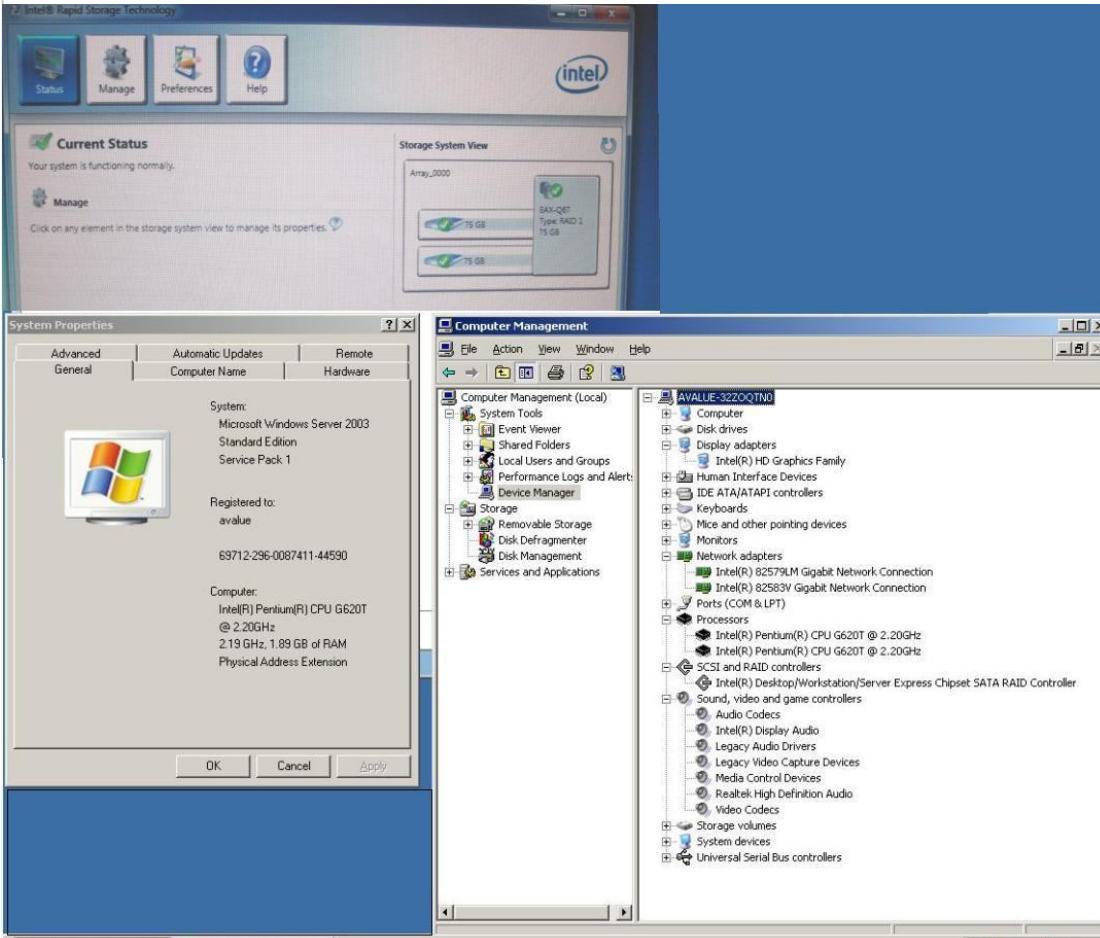
Avalue USA
sales@avalue-usa.com
Tel: +1-732-578-0200
Fax: +1-732-578-0250

BCM Advanced Research
BCMSales@bcmcom.com
Tel: +1-949-470-1888
Fax: +1-949-470-0971

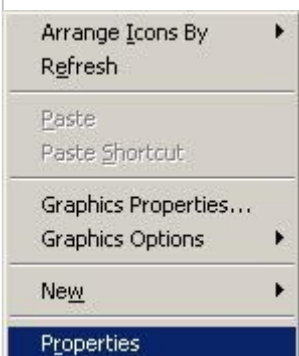
Avalue China
sales.china@avalue.com.cn
Tel: +86-21-5426-3399
Fax: +86-21-6495-0370

7F, 228, Lian-Cheng Road, Chung Ho City, Taipei, Taiwan R.O.C.

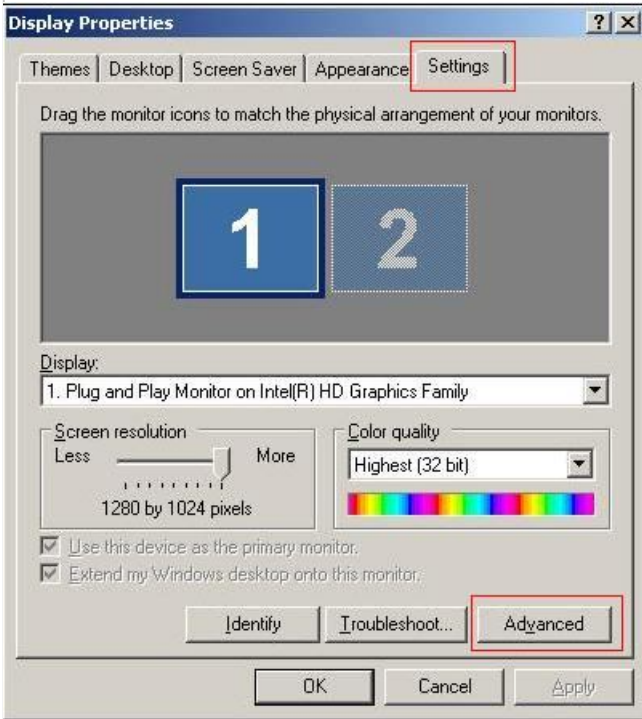
18. Finally, we can get the complete installation.



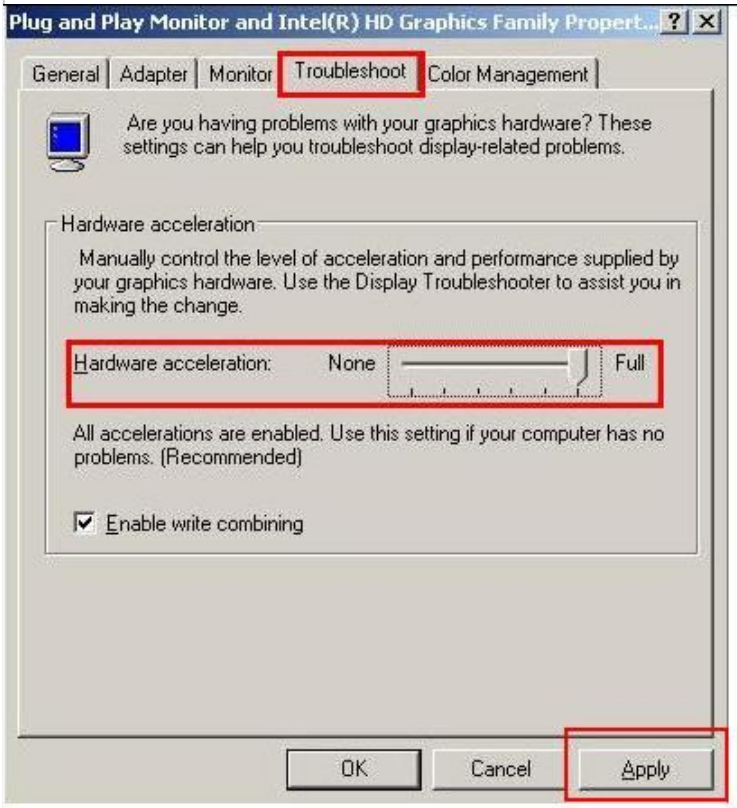
19. When we are going to setup the multi-monitor, please press the right button of the mouse on the desktop to enter "Properties".



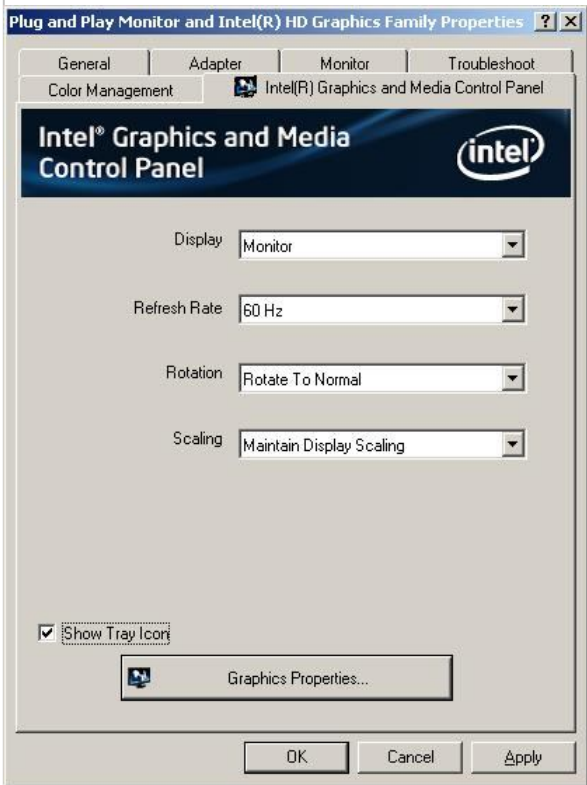
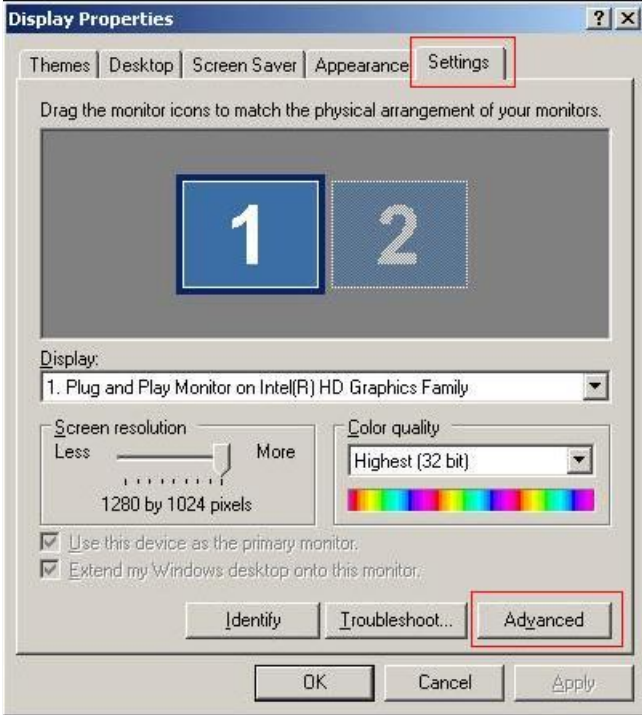
20. Please select the “Settings” tab and enter the “Advanced” sub-menu.



21. Please select the “Troubleshoot” tab and adjust the hardware acceleration to “Full”, then press “Apply”.



22. Re-entering the “Advanced” sub-menu, you will see the addition of Intel Graphics and Media control Panel. You can set the multiple displays.



Avalue Technology Inc.

www.avalue.com.tw
 sales@avalue.com.tw
 Tel:+886-2-82262345
 Fax:+886-2-82262777

Avalue Europe
 sales.europe@avalue.com.tw
 Tel: +45-7025-0310
 Fax: +45-4975-5026

Avalue USA
 sales@avalue-usa.com
 Tel: +1-732-578-0200
 Fax: +1-732-578-0250

BCM Advanced Research
 BCMSales@bcmcom.com
 Tel: +1-949-470-1888
 Fax: +1-949-470-0971

Avalue China
 sales.china@avalue.com.cn
 Tel: +86-21-5426-3399
 Fax: +86-21-6495-0370

7F, 228, Lian-Cheng Road, Chung Ho City, Taipei, Taiwan R.O.C.



Avalue Technology Inc.

7F, 228, Lian-Cheng Road, Chung Ho City, Taipei, Taiwan R.O.C.

www.avalue.com.tw
sales@avalue.com.tw
Tel:+886-2-82262345
Fax:+886-2-82262777

Avalue Europe
sales.europe@avalue.com.tw
Tel: +45-7025-0310
Fax: +45-4975-5026

Avalue USA
sales@avalue-usa.com
Tel: +1-732-578-0200
Fax: +1-732-578-0250

BCM Advanced Research
BCMSales@bcmcom.com
Tel: +1-949-470-1888
Fax: +1-949-470-0971

Avalue China
sales.china@avalue.com.cn
Tel: +86-21-5426-3399
Fax: +86-21-6495-0370