

FAQ / Application Note

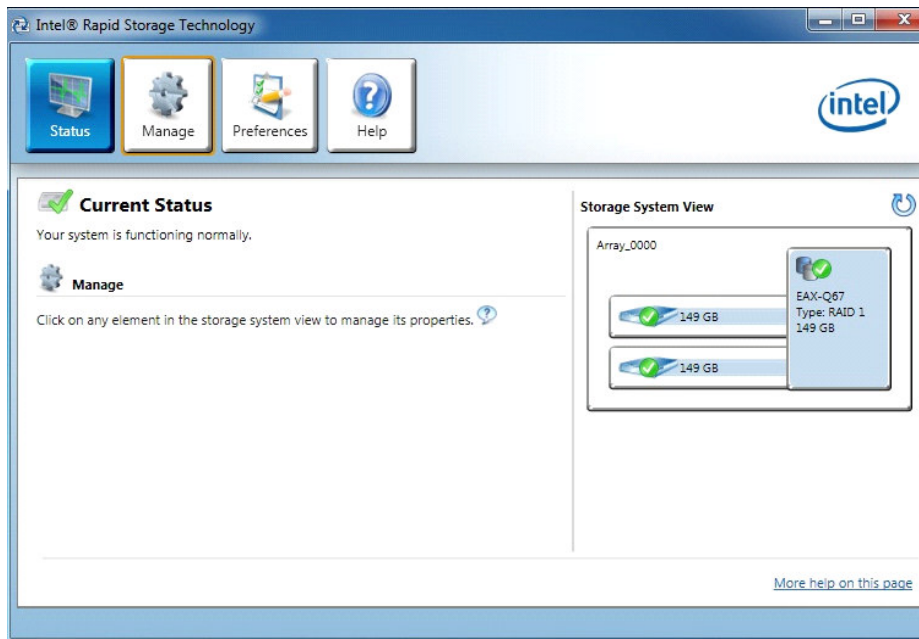
Subject : EAX-Q67 RAID1 Rebuild function	
FAQ Document No: : S12007	Date: 2012/06/27
Model Name. EAX-Q67	Rev. A1
Category: <input type="checkbox"/> General <input type="checkbox"/> H/W <input checked="" type="checkbox"/> S/W <input type="checkbox"/> Others, <u>Application</u>	
Purpose: After RAID1 ready, how to do Rebuild function.	

SATA HDD device:

- Port 0 SATA HDD: WD 160G WD1600AAJS-00L7A0 S/N: WCAV40156073
- Port1 SATA HDD: WD 160G WD1600AAJS-00L7A0 S/N:WCAV31239494

Please following below procedure step by step:

1. After setting RAID1 function in Windows 7 Professional OS, please SHUTDOWN your PC.



2. Replace new SATA HDD in SATA Port1
3. Power ON EAX-Q67 board.

Avalue Technology Inc.

7F, 228, Lian-Cheng Road, Chung Ho City, Taipei, Taiwan R.O.C.

www.avaluetech.com.tw
 sales@avaluetech.com.tw
 Tel:+886-2-82262345
 Fax:+886-2-82262777

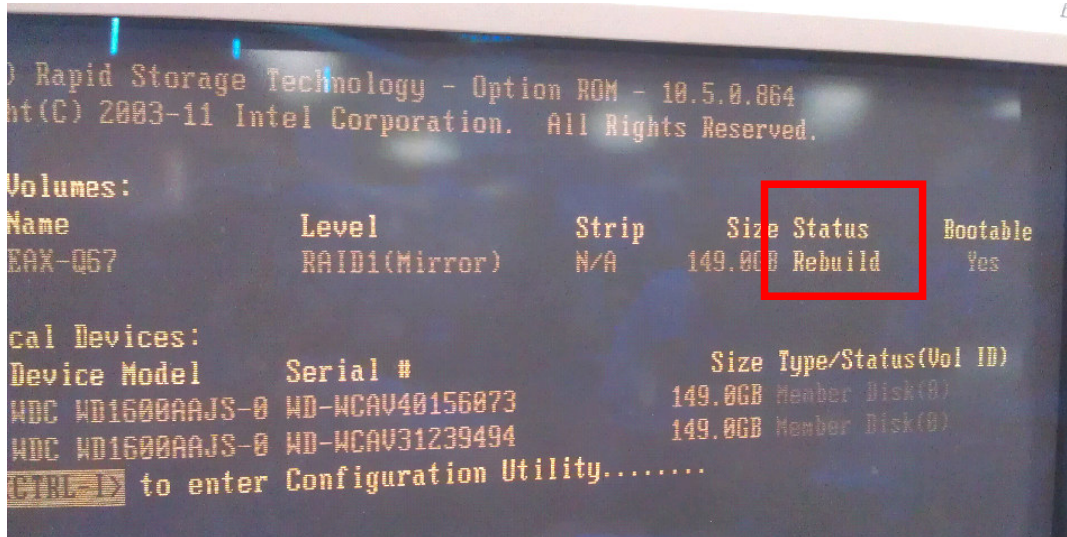
Avalue Europe
 sales.europe@avaluetech.com.tw
 Tel: +45-7025-0310
 Fax: +45-4975-5026

Avalue USA
 sales@avaluetech-usa.com
 Tel: +1-732-578-0200
 Fax: +1-732-578-0250

BCM Advanced Research
 BCM5Sales@bcmcom.com
 Tel: +1-949-470-1888
 Fax: +1-949-470-0971

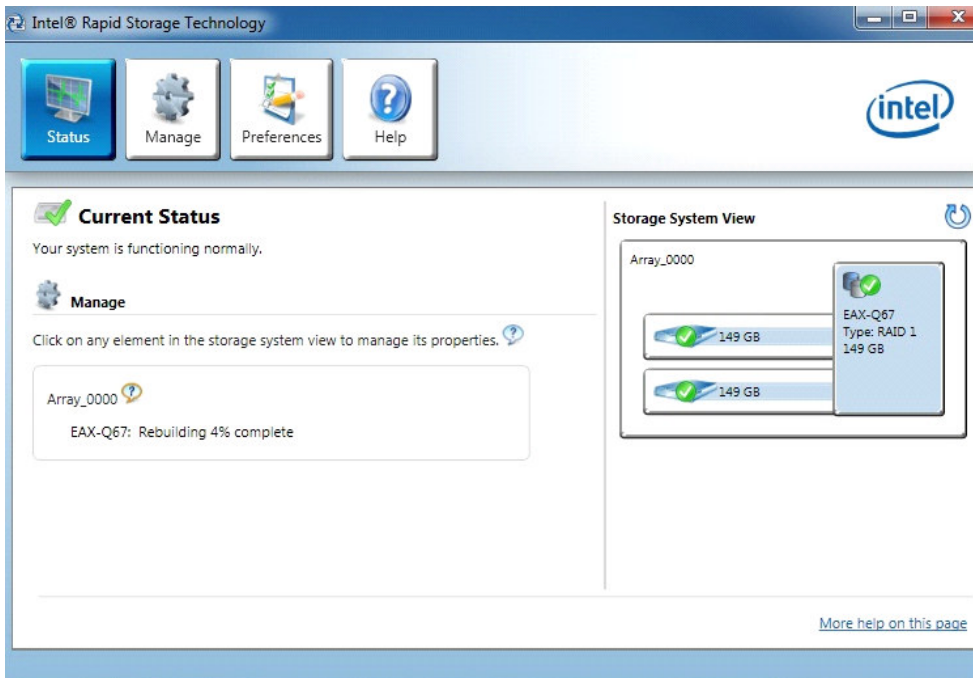
Avalue China
 sales.china@avaluetech.com.cn
 Tel: +86-21-5426-3399
 Fax: +86-21-6495-0370

4. Click “Ctrl+I” into the “Intel® Rapid storage Technology” Utility and check RAID status is “Rebuild”

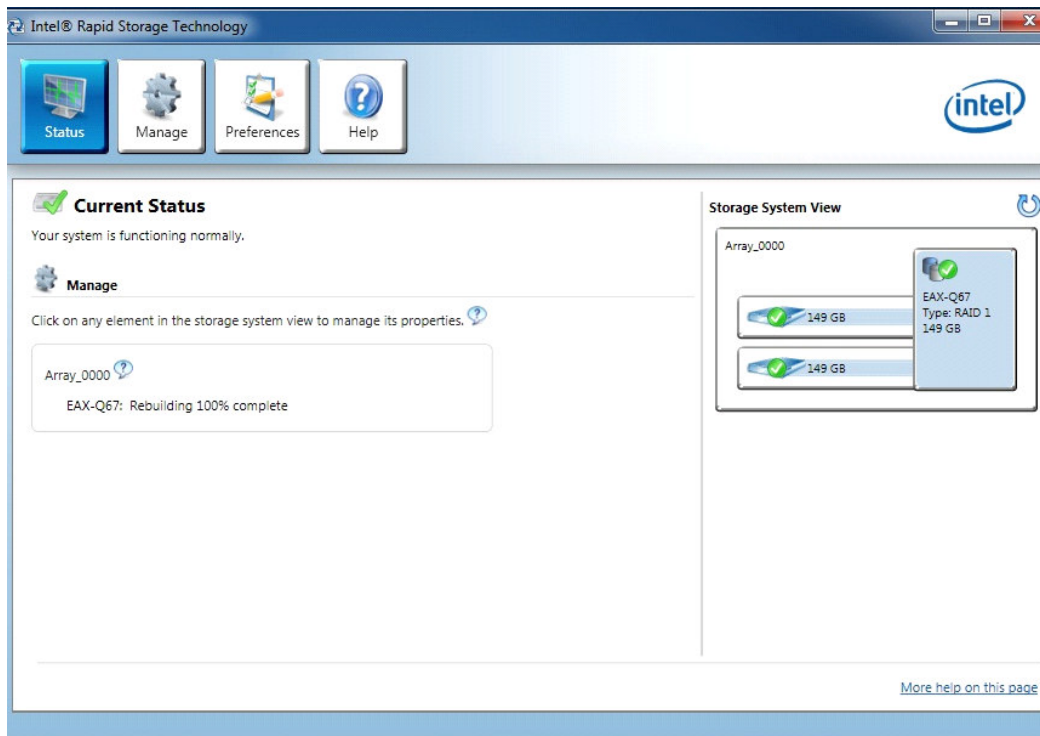


5. Restart EAX-Q67 and into Win 7 Pro OS.

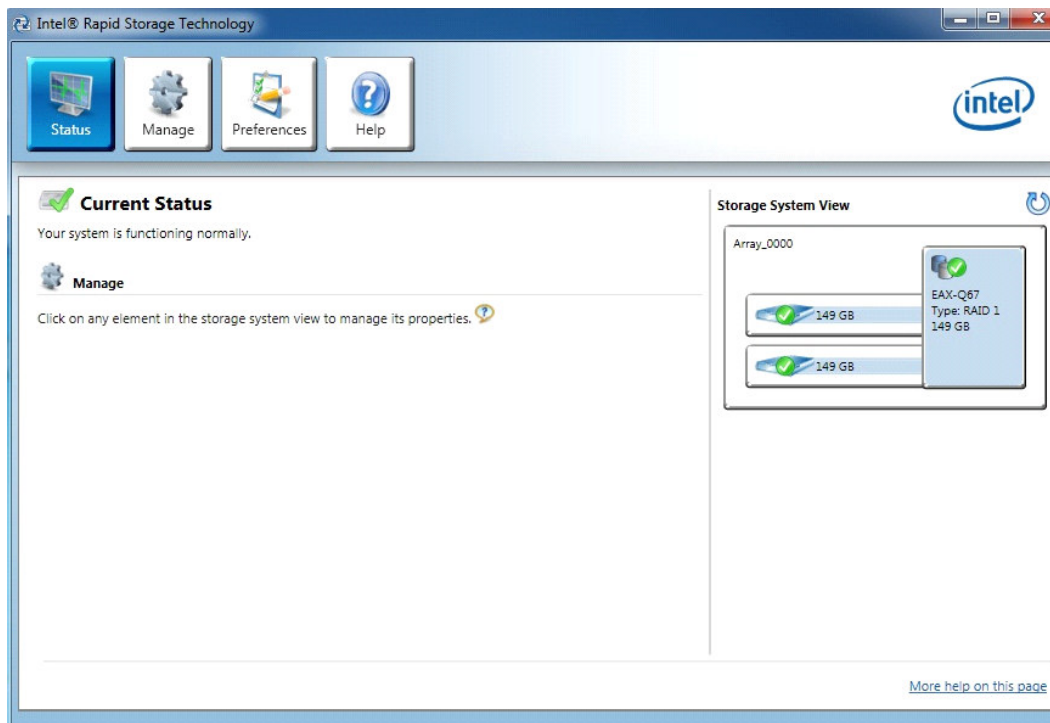
6. Open “Intel@ Rapid storage technology” utility, it will rebuild working automatically.
And you can see Rebuild process.



7. Waiting Rebuild 100% complete, the status shown “Your system is functioning normally”



The screenshot shows the Intel Rapid Storage Technology (IRST) management console. The 'Current Status' section displays a green checkmark and the message: "Your system is functioning normally." Below this, the 'Manage' section shows a list of storage elements. One element, 'Array_0000', is highlighted, showing its status as 'EAX-Q67: Rebuilding 100% complete'. The 'Storage System View' on the right shows a RAID 1 configuration with two 149 GB drives, both marked with green checkmarks, indicating they are healthy and the rebuild is complete.



This is an identical screenshot to the one above, showing the Intel Rapid Storage Technology (IRST) management console. The 'Current Status' section displays a green checkmark and the message: "Your system is functioning normally." Below this, the 'Manage' section shows a list of storage elements. One element, 'Array_0000', is highlighted, showing its status as 'EAX-Q67: Rebuilding 100% complete'. The 'Storage System View' on the right shows a RAID 1 configuration with two 149 GB drives, both marked with green checkmarks, indicating they are healthy and the rebuild is complete.

-END

Avalue Technology Inc.

www.avalue.com.tw
 sales@avalue.com.tw
 Tel:+886-2-82262345
 Fax:+886-2-82262777

Avalue Europe
 sales.europe@avalue.com.tw
 Tel: +45-7025-0310
 Fax: +45-4975-5026

Avalue USA
 sales@avalue-usa.com
 Tel: +1-732-578-0200
 Fax: +1-732-578-0250

BCM Advanced Research
 BCM5Sales@bcmcom.com
 Tel: +1-949-470-1888
 Fax: +1-949-470-0971

Avalue China
 sales.china@avalue.com.cn
 Tel: +86-21-5426-3399
 Fax: +86-21-6495-0370

7F, 228, Lian-Cheng Road, Chung Ho City, Taipei, Taiwan R.O.C.