



Application Note

Subject : How to use HPUSEFW(USB DOS bootable format tool for Windows) to format you USB Pen-Drive.

FAQ Document No: S12001

Date: 2012/01/16

Model Name. All

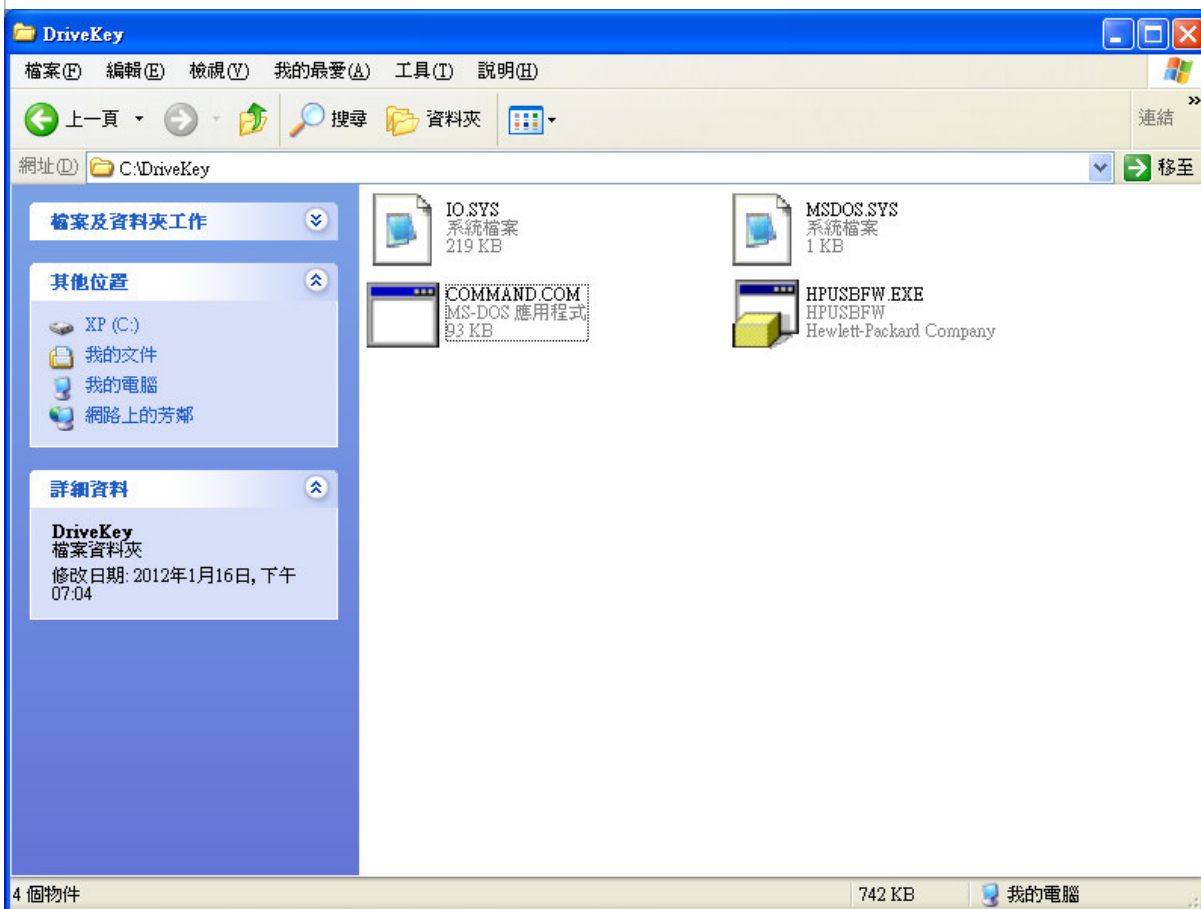
Rev. A1

Category: General H/W S/W Others,

Purpose :

Provide required Pure DOS environment for Re-flash BIOS with USB Pen-drive.

1. Uncompress DriveKey_HPUSEFW.rar (.Zip) to your Desktop PC C:\DriveKey folder
2. Insert empty USB Pen-drive into your desktop PC USB Port. Please make sure only one partition on this USB Pen-drive.
3. Under Windows XP environment, click HPUSEFW.exe



Avalue Technology Inc.

7F, 228, Lian-Cheng Road, Chung Ho City, Taipei, Taiwan R.O.C.

www.avalue.com.tw
sales@avalue.com.tw
Tel:+886-2-82262345
Fax:+886-2-82262777

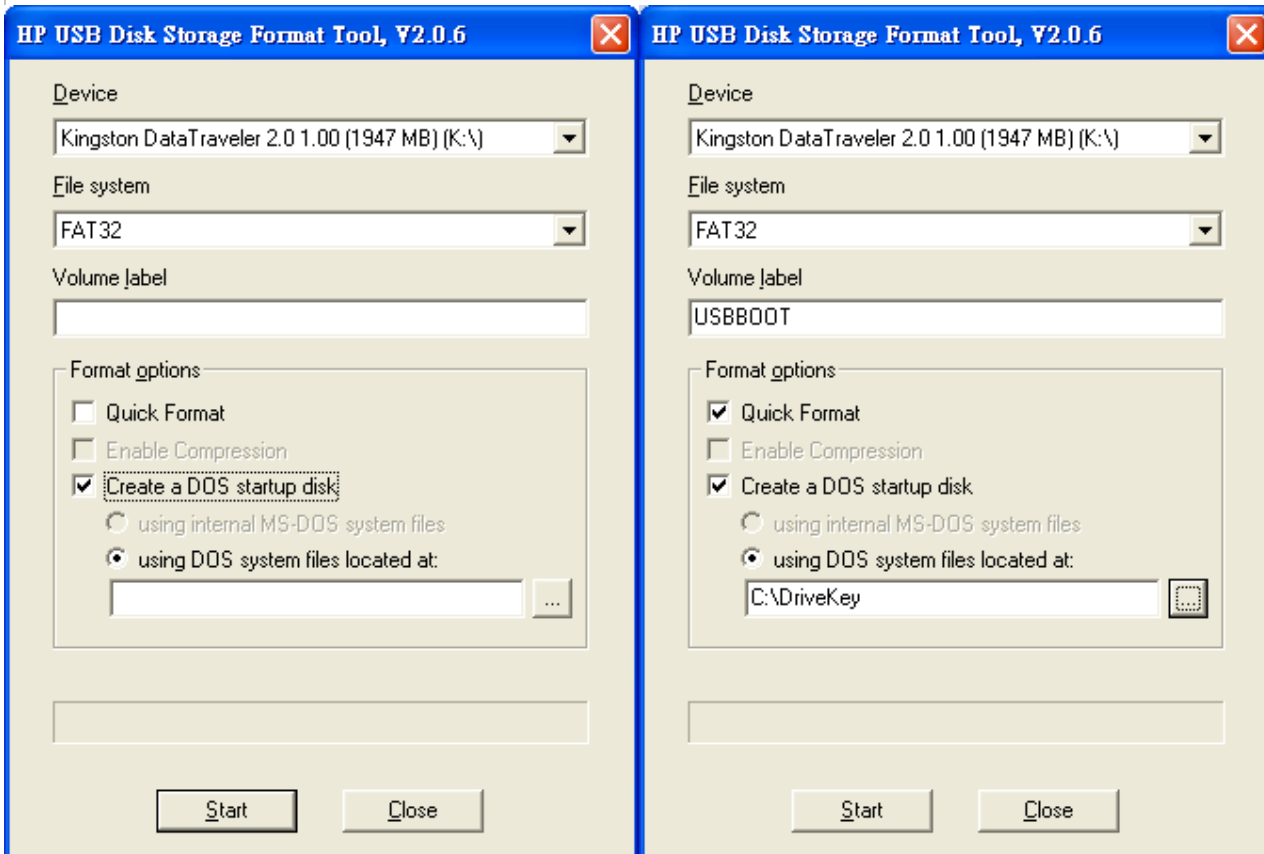
Avalue Europe
sales.europe@avalue.com.tw
Tel: +45-7025-0310
Fax: +45-4975-5026

Avalue USA
sales@avalue-usa.com
Tel: +1-732-578-0200
Fax: +1-732-578-0250

BCM Advanced Research
BCMSales@bcmcom.com
Tel: +1-949-470-1888
Fax: +1-949-470-0971

Avalue China
sales.china@avalue.com.cn
Tel: +86-21-5426-3399
Fax: +86-21-6495-0370

4. Check Device name listed with the correct Pen-driver name and drive letter.
5. Fill Volume Label name with XXXX
6. Mark the Quick format
7. Mark the **“Create a DOS Startup disk”** and locate the **“Using DOS system files Located at” “C:\DriverKey”** by click the Browser icon.



8. Click Start button. And click Y for below POP up screen.



Avalue Technology Inc.

www.avalue.com.tw
 sales@avalue.com.tw
 Tel:+886-2-82262345
 Fax:+886-2-82262777

Avalue Europe
 sales.europe@avalue.com.tw
 Tel: +45-7025-0310
 Fax: +45-4975-5026

Avalue USA
 sales@avalue-usa.com
 Tel: +1-732-578-0200
 Fax: +1-732-578-0250

7F, 228, Lian-Cheng Road, Chung Ho City, Taipei, Taiwan R.O.C.

BCM Advanced Research
 BCM5ales@bcmcom.com
 Tel: +1-949-470-1888
 Fax: +1-949-470-0971

Avalue China
 sales.china@avalue.com.cn
 Tel: +86-21-5426-3399
 Fax: +86-21-6495-0370

9. After couple seconds, the format complete message POP up.



10. Check the USB Pen-Drive, it will have 3 hidden files inside.



Avalue Technology Inc.

www.avalue.com.tw
 sales@avalue.com.tw
 Tel:+886-2-82262345
 Fax:+886-2-82262777

Avalue Europe
 sales.europe@avalue.com.tw
 Tel: +45-7025-0310
 Fax: +45-4975-5026

Avalue USA
 sales@avalue-usa.com
 Tel: +1-732-578-0200
 Fax: +1-732-578-0250

BCM Advanced Research
 BCM5ales@bcmcom.com
 Tel: +1-949-470-1888
 Fax: +1-949-470-0971

Avalue China
 sales.china@avalue.com.cn
 Tel: +86-21-5426-3399
 Fax: +86-21-6495-0370

7F, 228, Lian-Cheng Road, Chung Ho City, Taipei, Taiwan R.O.C.

11. Copy the BIOS file (*.BIN), flash utility (AWD896.EXE) and Auto-flash batch file (*.BAT) into this bootable USB Pen-drive.



12. Put this USB Pen-drive into target PC USB Port.

13. Boot from target PC and into BIOS for change First Boot sequence to USB-HDD

14. Reboot target PC, it will show you “Microsoft ® Windows 98 DOS prompt”

15. Type”PMPC10.bat” and Press Enter key.

16. After BIOS flash completed, Reboot this target PC and Into BIOS for Loading Optimized Defaults.

17. Done.

Avalue Technology Inc.

www.avalue.com.tw
sales@avalue.com.tw
Tel:+886-2-82262345
Fax:+886-2-82262777

Avalue Europe
sales.europe@avalue.com.tw
Tel: +45-7025-0310
Fax: +45-4975-5026

Avalue USA
sales@avalue-usa.com
Tel: +1-732-578-0200
Fax: +1-732-578-0250

BCM Advanced Research
BCMSales@bcmcom.com
Tel: +1-949-470-1888
Fax: +1-949-470-0971

Avalue China
sales.china@avalue.com.cn
Tel: +86-21-5426-3399
Fax: +86-21-6495-0370

7F, 228, Lian-Cheng Road, Chung Ho City, Taipei, Taiwan R.O.C.