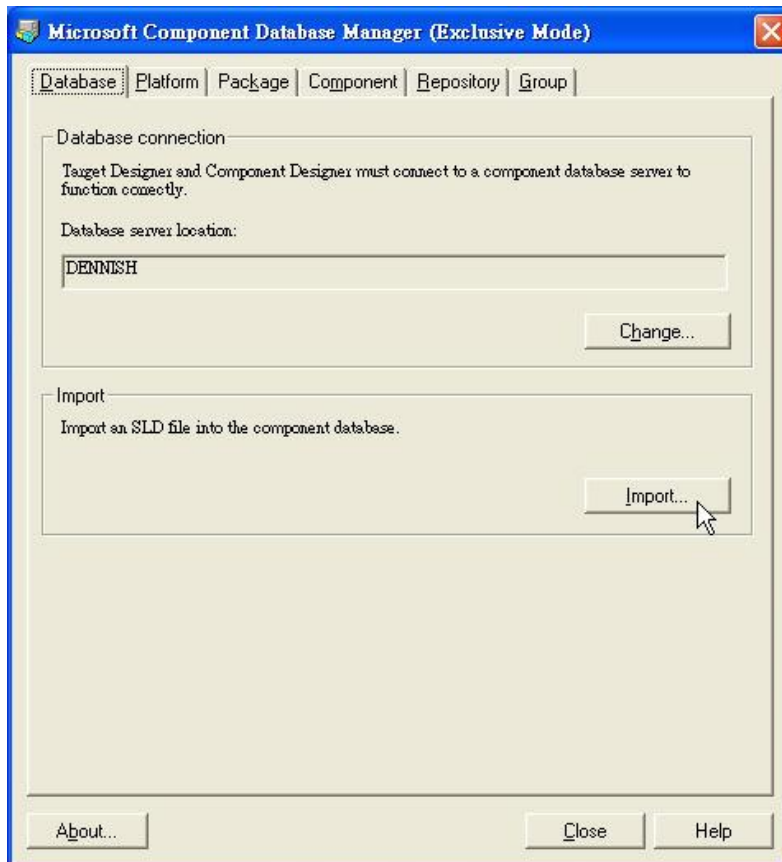


FAQ / Application Note

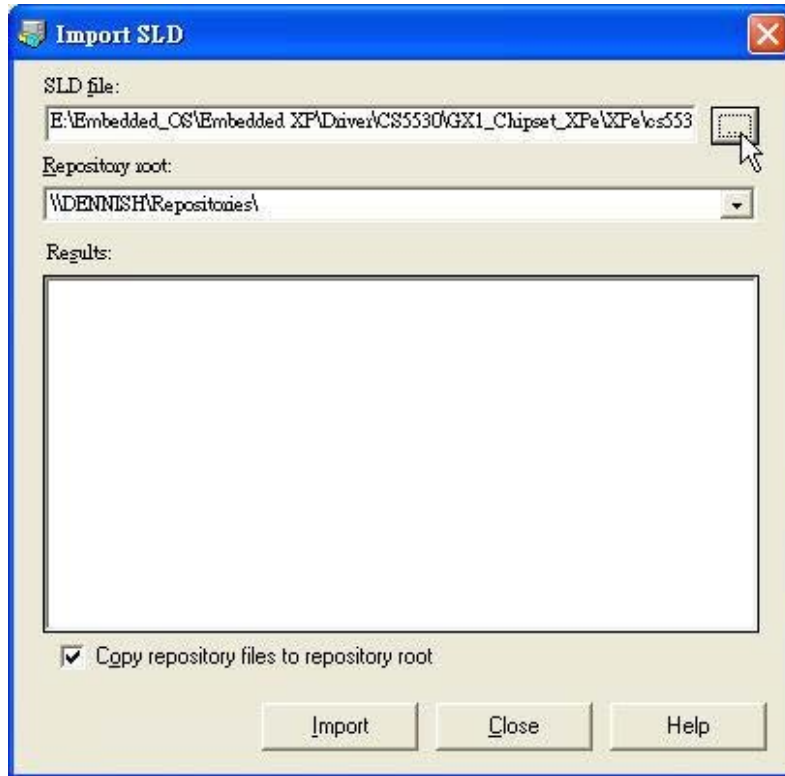
Subject : How to install devices drivers for Windows XP Embedded ?	
FAQ Document No: S08013	Date: 2008/08/11
Model No. All	Rev.A1
Category: <input type="checkbox"/> General <input type="checkbox"/> H/W <input checked="" type="checkbox"/> SW <input type="checkbox"/> Others, _____	
Purpose : step by step to import driver to XPe DB	

We can import Windows XP embedded Device driver by using the utility “Component database manager”. For Example, if we want to import NS CS5530 PCI bridge driver for Windows XP embedded, you can follow following procedure to install it.

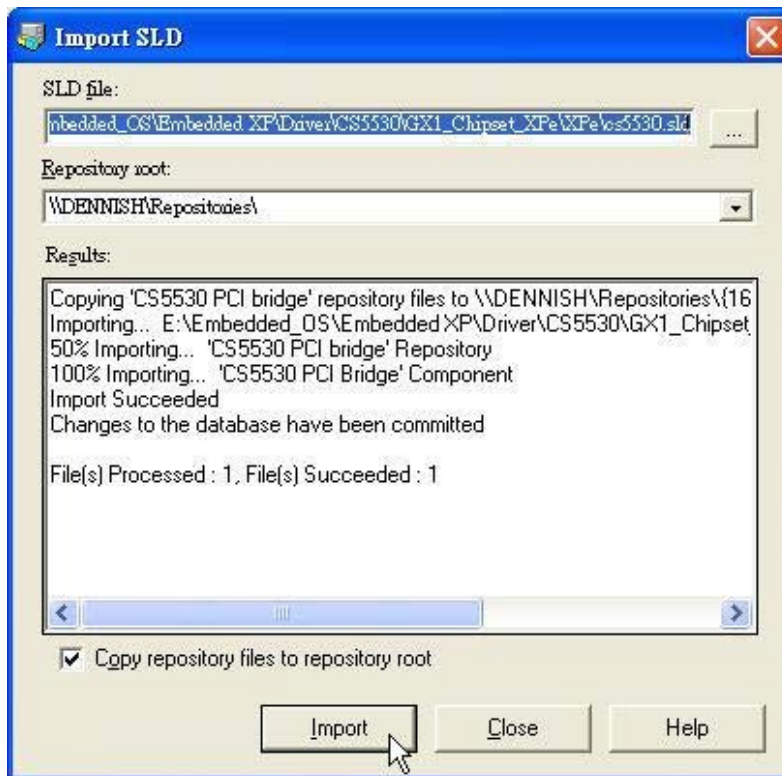
1. Execute “Component database manager”, you will see a Window comes up on the desktop.



2. Press "import" button and then press button "... " to search the sld file(Embedded XP driver) for device.



3. Then press the button "import"



Then you will see a message "File(s) Processed : 1, File(s) Succeeded : 1", that means the driver import procedure has been finished.

3. After importing device driver, you can find it in components list in Target designer.

